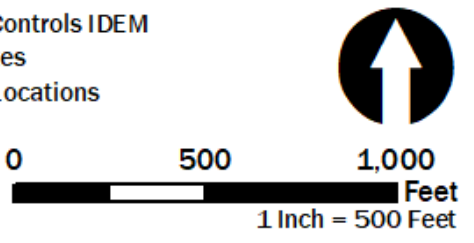


Study Area	Managed Land	Oil and Gas Well*	Construction/Demolition Site	Brownfields
Religious Facility	Natural Area	EDR Site	Solid Waste Landfill	Institutional Controls IDEM
Cemetery	NRHP Historic District	Superfund	Infectious/Medical Waste	NPDES Facilities
Railroad	NWI River/Stream	RCRA Generator/TSD	Leaking Underground Storage Tank	NPDES Pipe Locations
School	NWI Wetland	State Cleanup Site	Open Dump Waste Site	
Recreation Facility*	NWI Pond/Lake	Underground Storage Tank	Tire Waste Site	
Trail	Floodplain - DFIRM	Voluntary Remediation Program	Landfill Boundary	

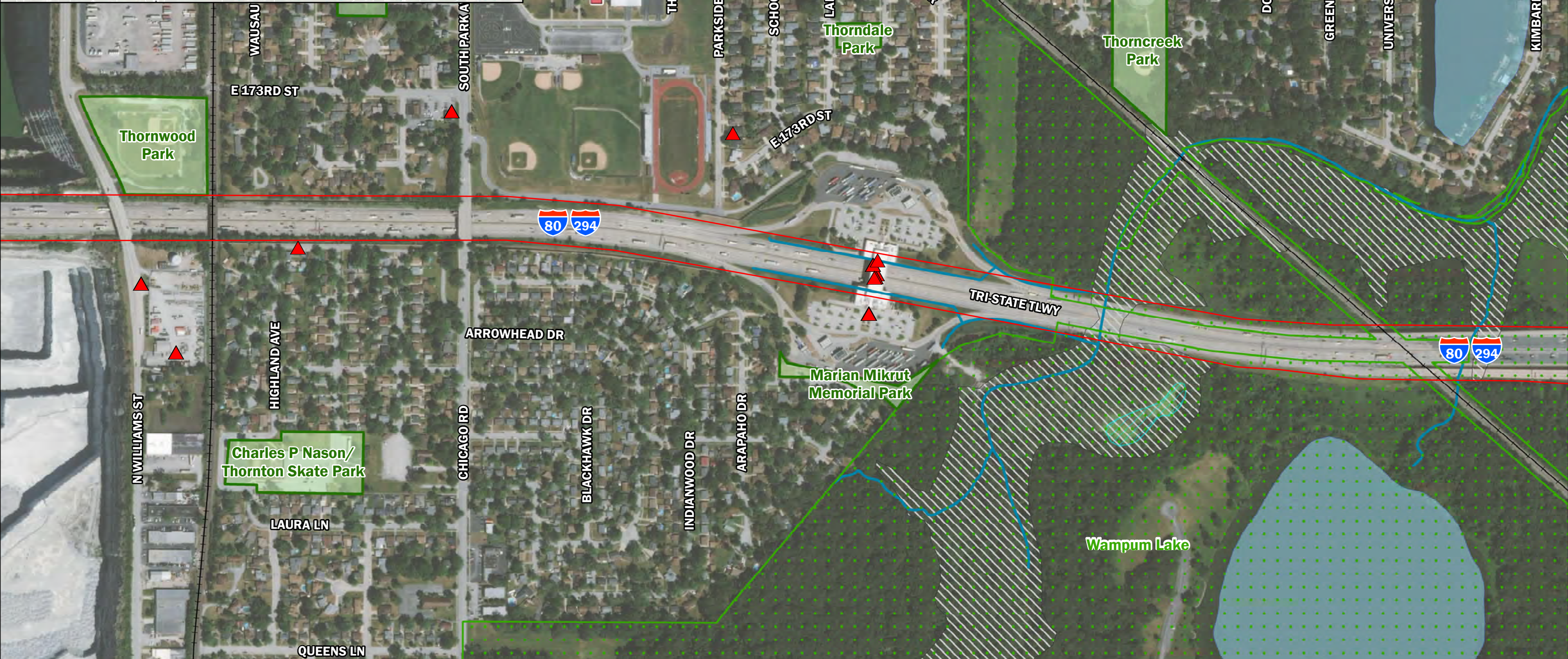
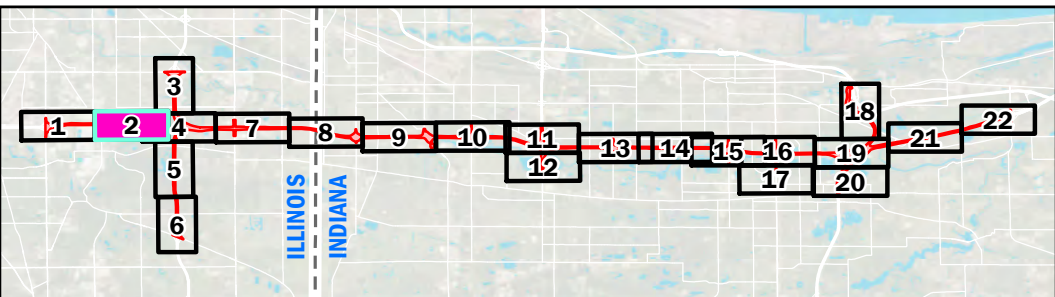
*Feature Not Available for Illinois



Sources
 Non-Orthophotography Data -
 Obtained from the State of
 Indiana Geographical
 Information Office Library and
 Cook County Government
 Orthophotography
 Obtained from
 ESRI World Imagery
 (www.arcgis.com)

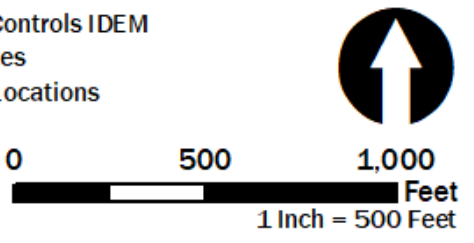
**I-80/94 Borman Expressway PEL Study
 Environmental Features
 Sheet 1 of 22**

Des. 1901643	
Date: 11/17/2021	



Study Area	Managed Land	Oil and Gas Well*	Construction/Demolition Site	Brownfields
Religious Facility	Natural Area	EDR Site	Solid Waste Landfill	Institutional Controls IDEM
Cemetery	NRHP Historic District	Superfund	Infectious/Medical Waste	NPDES Facilities
Railroad	NWI River/Stream	RCRA Generator/TSD	Leaking Underground Storage Tank	NPDES Pipe Locations
School	NWI Wetland	State Cleanup Site	Open Dump Waste Site	
Recreation Facility*	NWI Pond/Lake	Underground Storage Tank	Tire Waste Site	
Trail	Floodplain - DFIRM	Voluntary Remediation Program	Landfill Boundary	

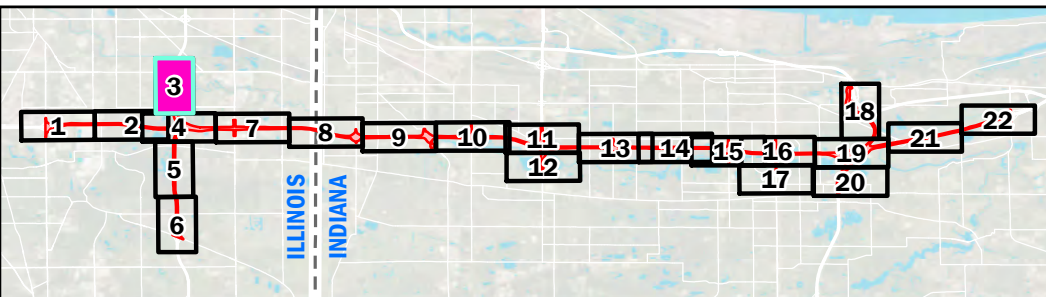
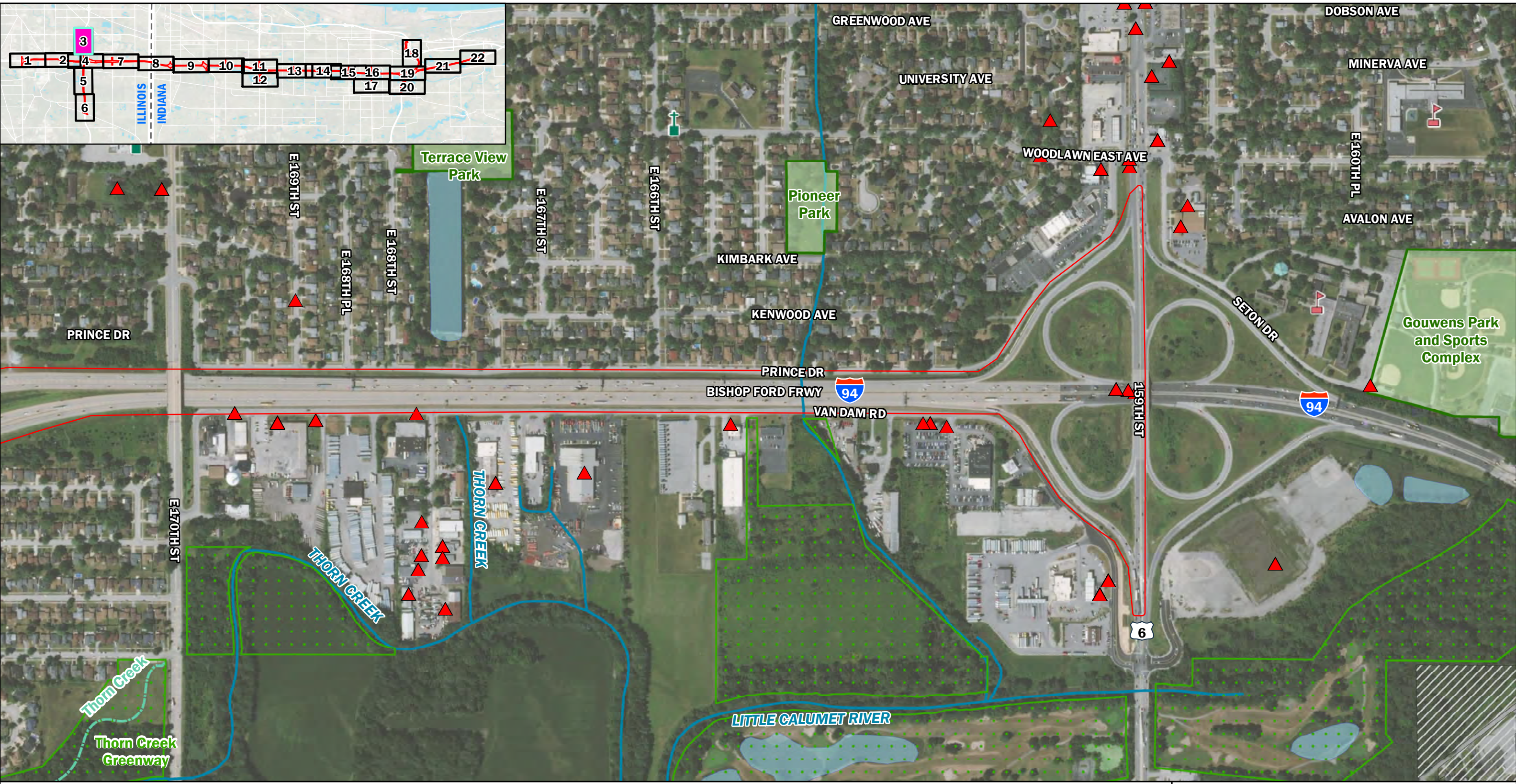
*Feature Not Available for Illinois



Sources:
 Non-Orthophotography Data -
 Obtained from the State of
 Indiana Geographical
 Information Office Library and
 Cook County Government
 Orthophotography -
 Obtained from
 ESRI World Imagery
 (www.arcgis.com)

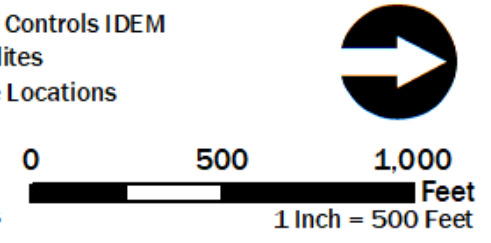
**I-80/94 Borman Expressway PEL Study
 Environmental Features
 Sheet 2 of 22**

Des. 1901643	
Date: 11/17/2021	



Study Area	Managed Land	Oil and Gas Well*	Construction/Demolition Site	Brownfields
Religious Facility	Natural Area	EDR Site	Solid Waste Landfill	Institutional Controls IDEM
Cemetery	NRHP Historic District	Superfund	Infectious/Medical Waste	NPDES Facilities
Railroad	NWI River/Stream	RCRA Generator/TSD	Leaking Underground Storage Tank	NPDES Pipe Locations
School	NWI Wetland	State Cleanup Site	Open Dump Waste Site	
Recreation Facility*	NWI Pond/Lake	Underground Storage Tank	Tire Waste Site	
Trail	Floodplain - DFIRM	Voluntary Remediation Program	Landfill Boundary	

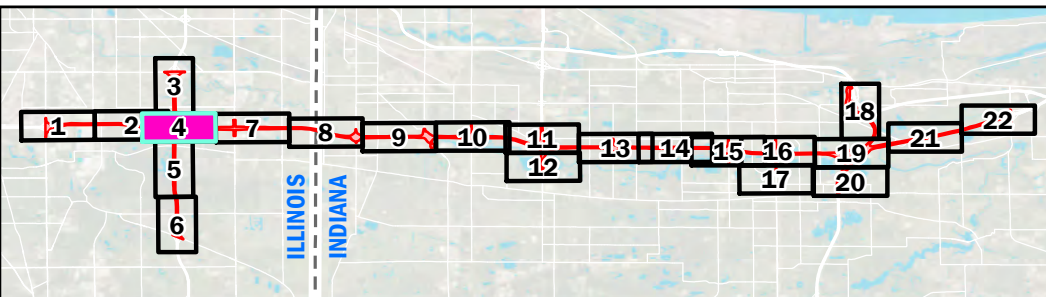
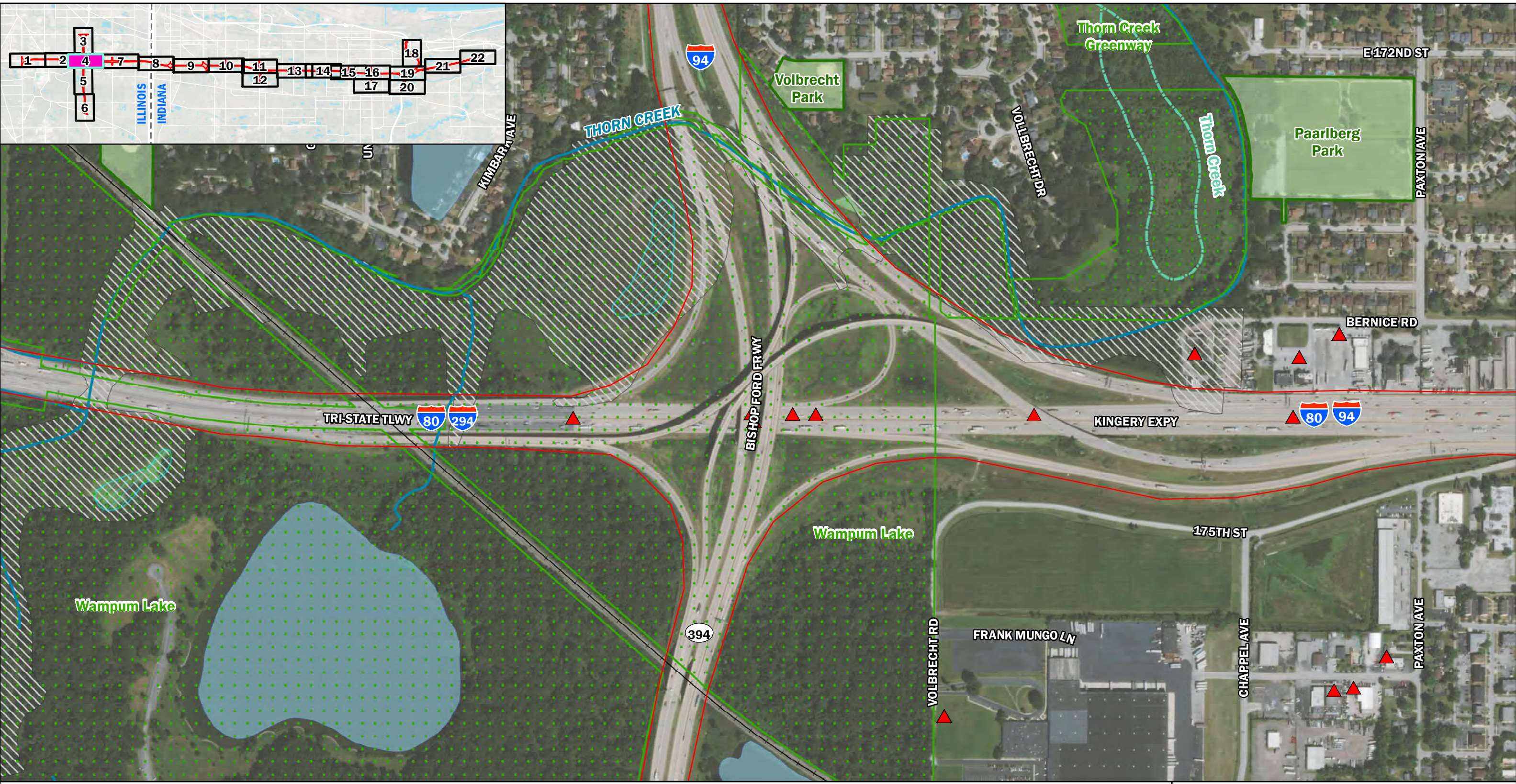
*Feature Not Available for Illinois



Sources:
 Non-Orthophotography Data -
 Obtained from the State of
 Indiana Geographical
 Information Office Library and
 Cook County Government
 Orthophotography
 Obtained from
 ESRI World Imagery
 (www.arcgis.com)

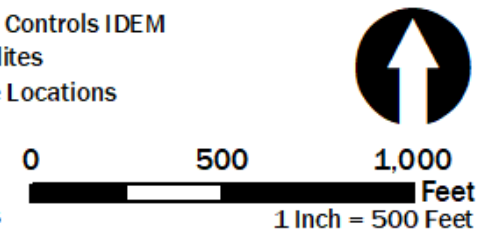
**I-80/94 Borman Expressway PEL Study
 Environmental Features
 Sheet 3 of 22**

Des. 1901643	
Date: 11/17/2021	



Study Area	Managed Land	Oil and Gas Well*	Construction/Demolition Site	Brownfields
Religious Facility	Natural Area	EDR Site	Solid Waste Landfill	Institutional Controls IDEM
Cemetery	NRHP Historic District	Superfund	Infectious/Medical Waste	NPDES Facilities
Railroad	NWI River/Stream	RCRA Generator/TSD	Leaking Underground Storage Tank	NPDES Pipe Locations
School	NWI Wetland	State Cleanup Site	Open Dump Waste Site	
Recreation Facility*	NWI Pond/Lake	Underground Storage Tank	Tire Waste Site	
Trail	Floodplain - DFIRM	Voluntary Remediation Program	Landfill Boundary	

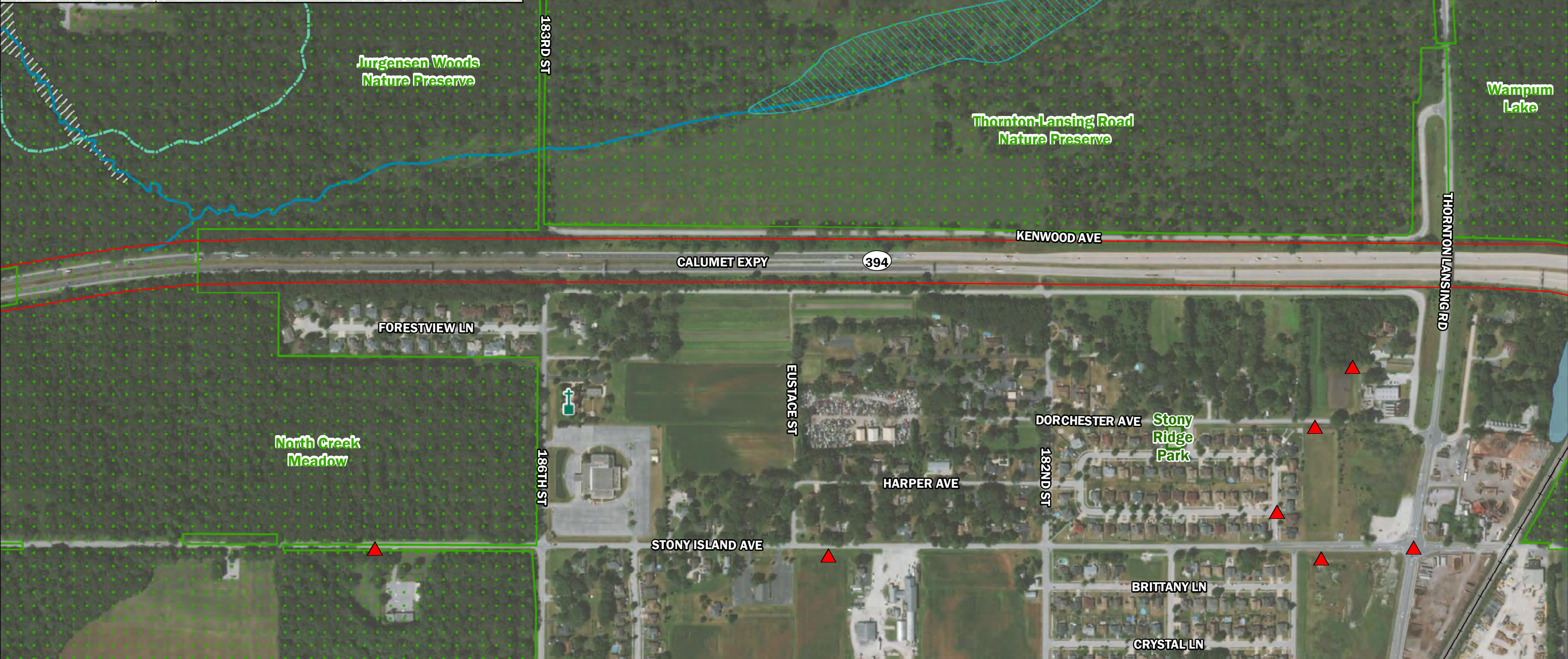
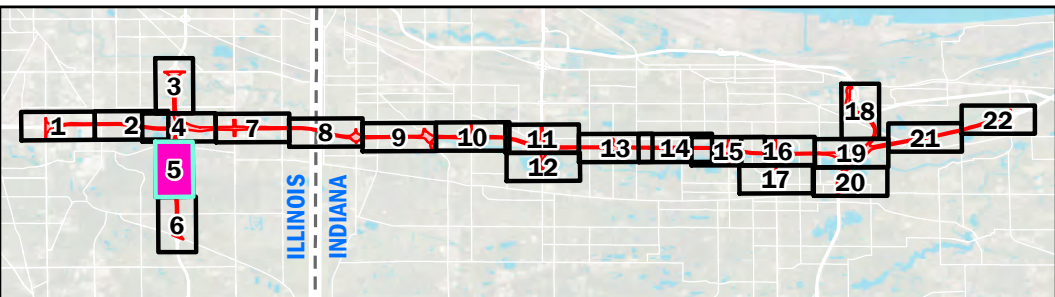
*Feature Not Available for Illinois



Sources:
 Non-Orthophotography Data -
 Obtained from the State of
 Indiana Geographical
 Information Office Library and
 Cook County Government
 Orthophotography -
 Obtained from
 ESRI World Imagery
 (www.arcgis.com)

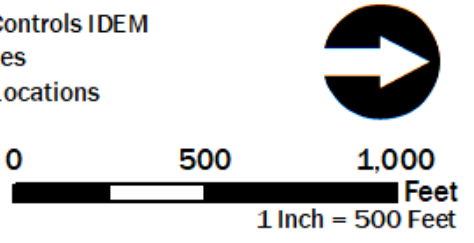
**I-80/94 Borman Expressway PEL Study
 Environmental Features
 Sheet 4 of 22**

Des. 1901643	
Date: 11/17/2021	



Study Area	Managed Land	Oil and Gas Well*	Construction/Demolition Site	Brownfields
Religious Facility	Natural Area	EDR Site	Solid Waste Landfill	Institutional Controls IDEM
Cemetery	NRHP Historic District	Superfund	Infectious/Medical Waste	NPDES Facilities
Railroad	NWI River/Stream	RCRA Generator/TSD	Leaking Underground Storage Tank	NPDES Pipe Locations
School	NWI Wetland	State Cleanup Site	Open Dump Waste Site	
Recreation Facility*	NWI Pond/Lake	Underground Storage Tank	Tire Waste Site	
Trail	Floodplain - DFIRM	Voluntary Remediation Program	Landfill Boundary	

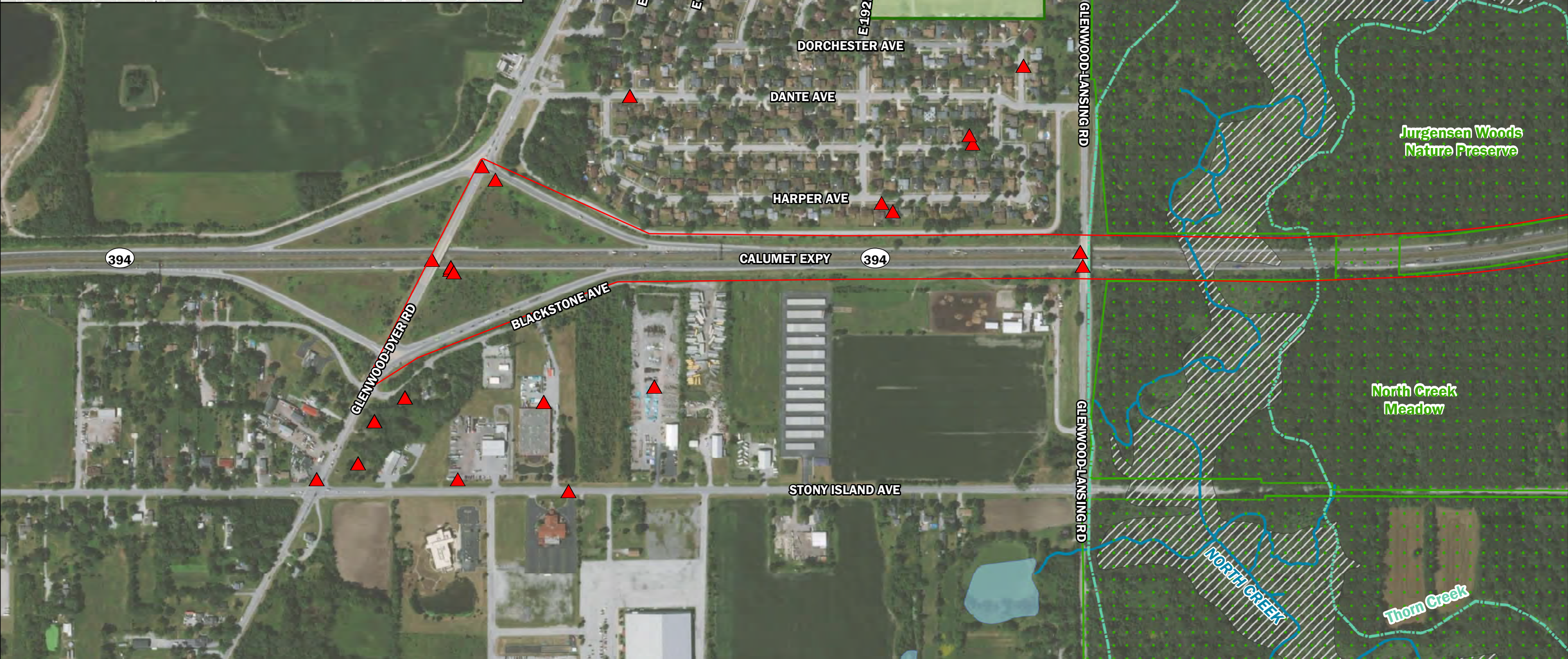
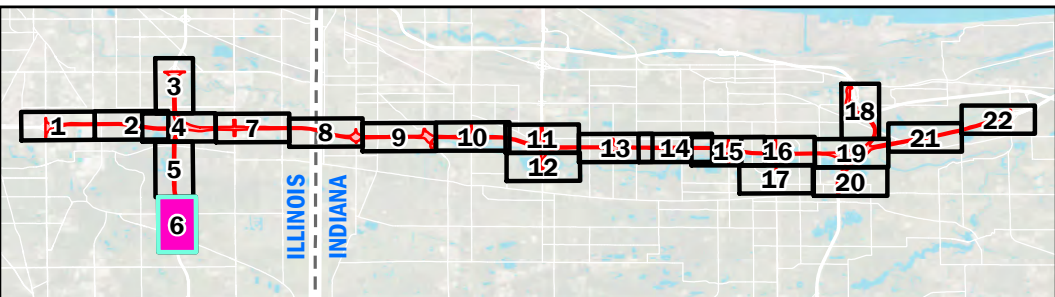
*Feature Not Available for Illinois



Sources:
 Non-Orthophotography Data -
 Obtained from the State of
 Indiana Geographical
 Information Office Library and
 Cook County Government
 Orthophotography -
 Obtained from
 ESRI World Imagery
 (www.arcgis.com)

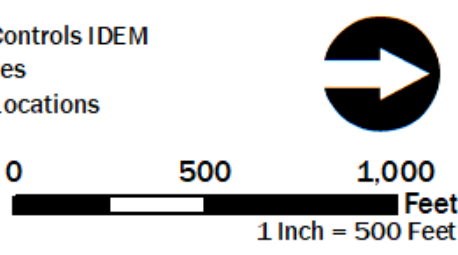
**I-80/94 Borman Expressway PEL Study
 Environmental Features
 Sheet 5 of 22**

Des. 1901643	
Date: 11/17/2021	



Study Area	Managed Land	Oil and Gas Well*	Construction/Demolition Site	Brownfields
Religious Facility	Natural Area	EDR Site	Solid Waste Landfill	Institutional Controls IDEM
Cemetery	NRHP Historic District	Superfund	Infectious/Medical Waste	NPDES Facilities
Railroad	NWI River/Stream	RCRA Generator/TSD	Leaking Underground Storage Tank	NPDES Pipe Locations
School	NWI Wetland	State Cleanup Site	Open Dump Waste Site	
Recreation Facility*	NWI Pond/Lake	Underground Storage Tank	Tire Waste Site	
Trail	Floodplain - DFIRM	Voluntary Remediation Program	Landfill Boundary	

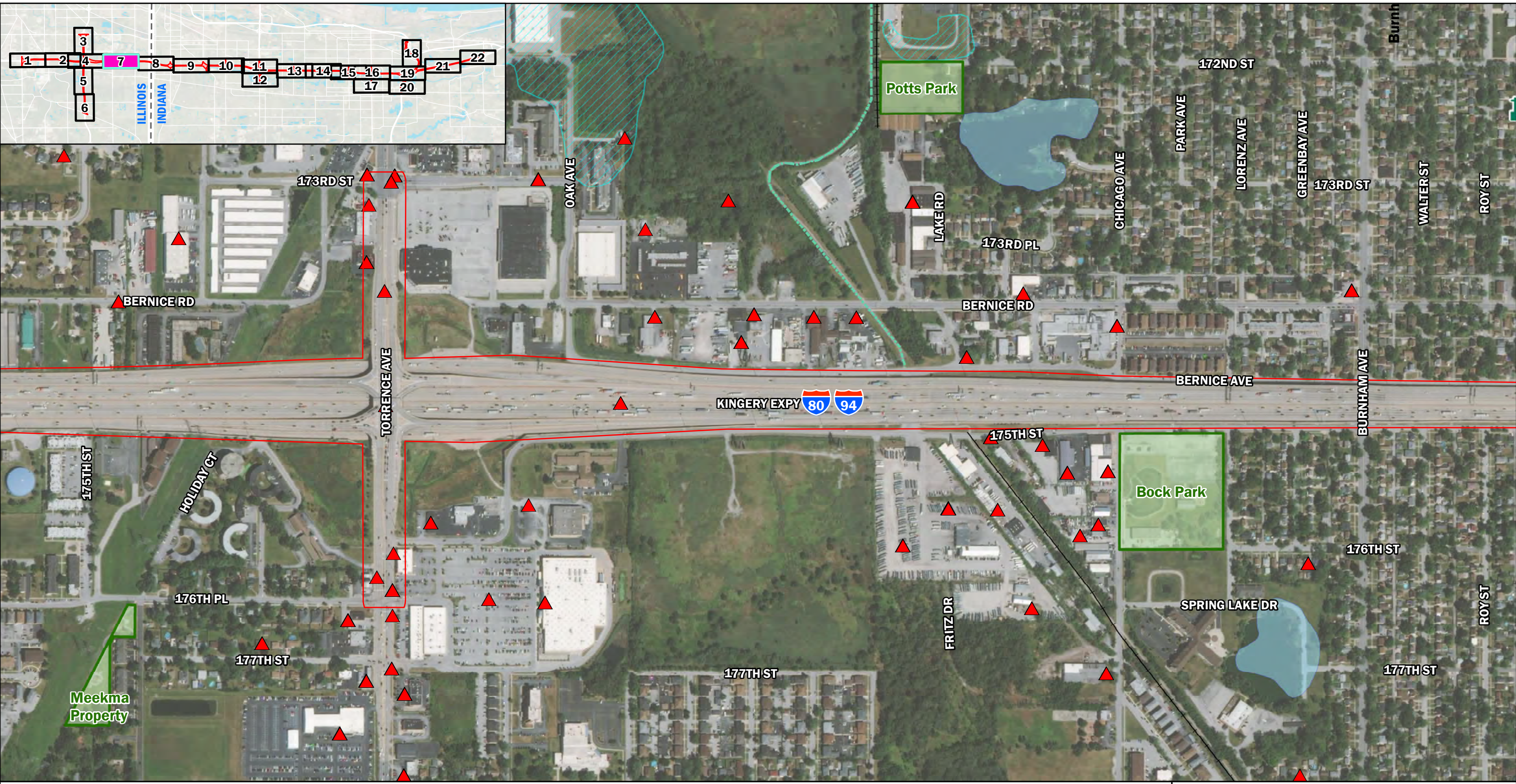
*Feature Not Available for Illinois



Sources:
 Non-Orthophotography Data -
 Obtained from the State of
 Indiana Geographical
 Information Office Library and
 Cook County Government
 Orthophotography -
 Obtained from
 ESRI World Imagery
 (www.arcgis.com)

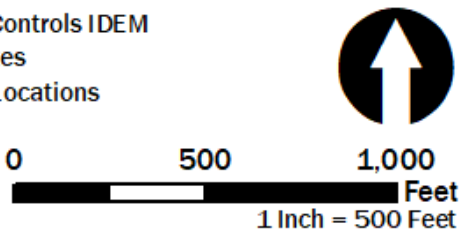
**I-80/94 Borman Expressway PEL Study
 Environmental Features
 Sheet 6 of 22**

Des. 1901643	
Date: 11/17/2021	



Study Area	Managed Land	Oil and Gas Well*	Construction/Demolition Site	Brownfields
Religious Facility	Natural Area	EDR Site	Solid Waste Landfill	Institutional Controls IDEM
Cemetery	NRHP Historic District	Superfund	Infectious/Medical Waste	NPDES Facilities
Railroad	NWI River/Stream	RCRA Generator/TSD	Leaking Underground Storage Tank	NPDES Pipe Locations
School	NWI Wetland	State Cleanup Site	Open Dump Waste Site	
Recreation Facility*	NWI Pond/Lake	Underground Storage Tank	Tire Waste Site	
Trail	Floodplain - DFIRM	Voluntary Remediation Program	Landfill Boundary	

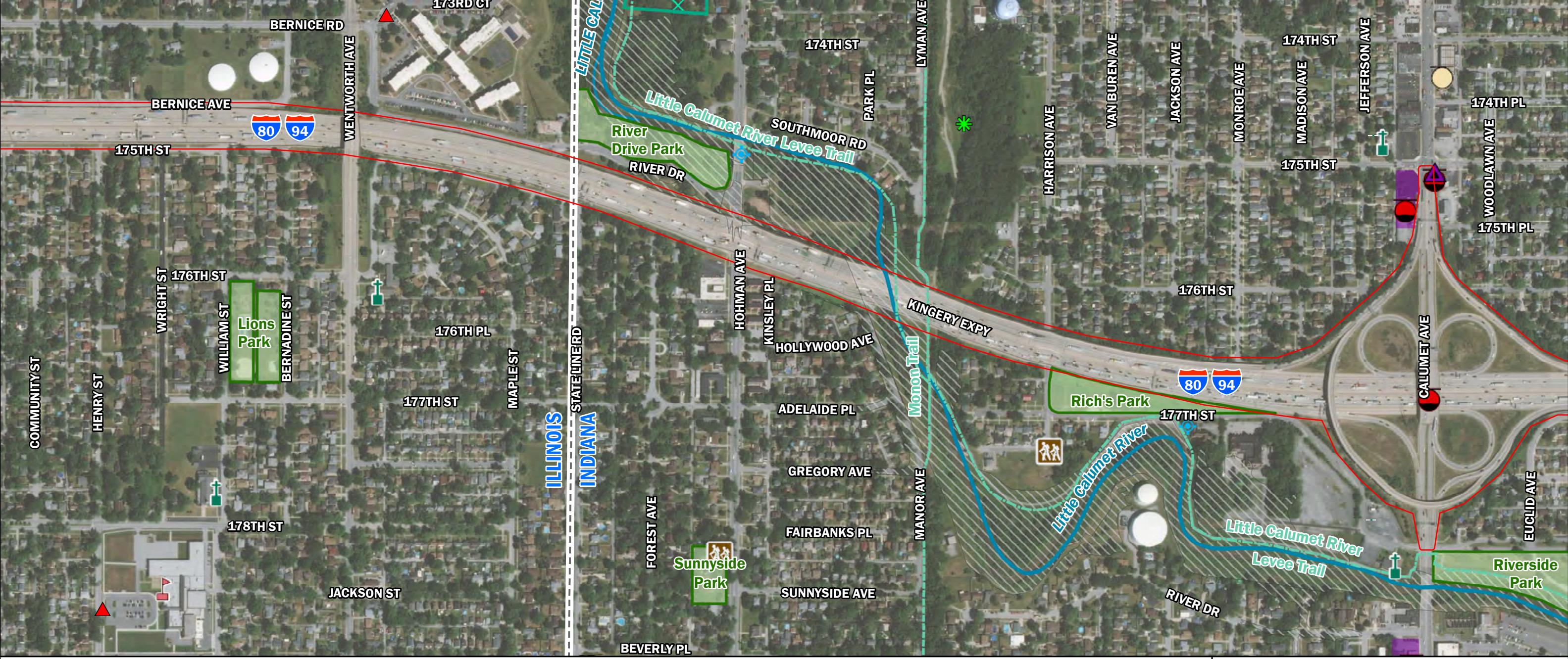
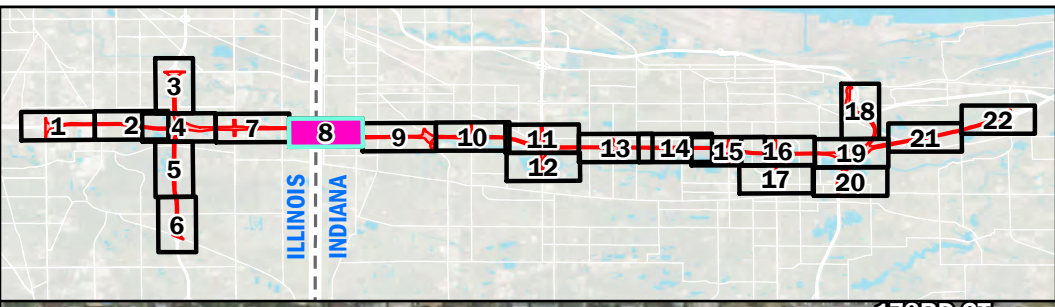
*Feature Not Available for Illinois



Sources:
 Non-Orthophotography Data -
 Obtained from the State of
 Indiana Geographical
 Information Office Library and
 Cook County Government
 Orthophotography -
 Obtained from
 ESRI World Imagery
 (www.arcgis.com)

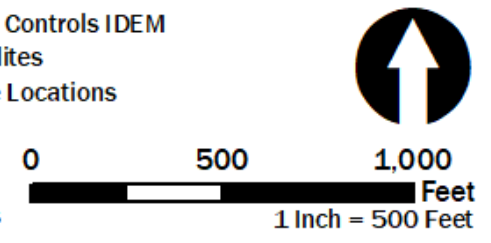
**I-80/94 Borman Expressway PEL Study
 Environmental Features
 Sheet 7 of 22**

Des. 1901643	
Date: 11/17/2021	



Study Area	Managed Land	Oil and Gas Well*	Construction/Demolition Site	Brownfields
Religious Facility	Natural Area	EDR Site	Solid Waste Landfill	Institutional Controls IDEM
Cemetery	NRHP Historic District	Superfund	Infectious/Medical Waste	NPDES Facilities
Railroad	NWI River/Stream	RCRA Generator/TSD	Leaking Underground Storage Tank	NPDES Pipe Locations
School	NWI Wetland	State Cleanup Site	Open Dump Waste Site	
Recreation Facility*	NWI Pond/Lake	Underground Storage Tank	Tire Waste Site	
Trail	Floodplain - DFIRM	Voluntary Remediation Program	Landfill Boundary	

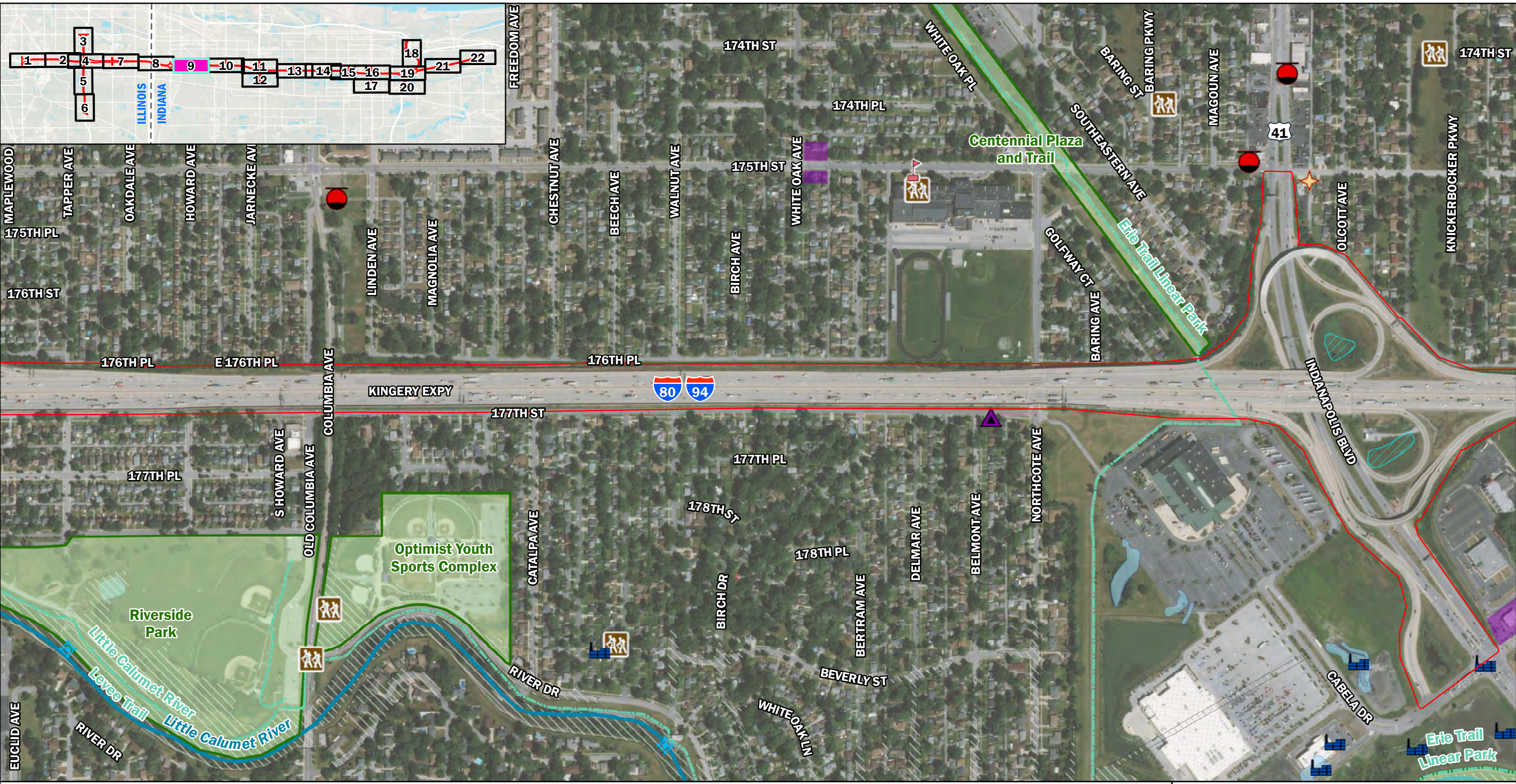
*Feature Not Available for Illinois



Sources:
 Non-Orthophotography Data -
 Obtained from the State of
 Indiana Geographical
 Information Office Library and
 Cook County Government
 Orthophotography -
 Obtained from
 ESRI World Imagery
 (www.arcgis.com)

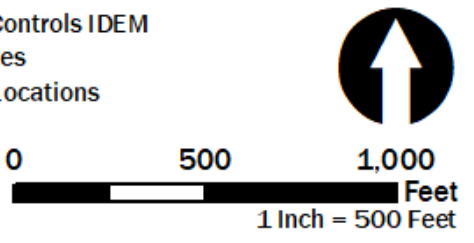
**I-80/94 Borman Expressway PEL Study
 Environmental Features
 Sheet 8 of 22**

Des. 1901643	
Date: 11/17/2021	



Study Area	Managed Land	Oil and Gas Well*	Construction/Demolition Site	Brownfields
Religious Facility	Natural Area	EDR Site	Solid Waste Landfill	Institutional Controls IDEM
Cemetery	NRHP Historic District	Superfund	Infectious/Medical Waste	NPDES Facilities
Railroad	NWI River/Stream	RCRA Generator/TSD	Leaking Underground Storage Tank	NPDES Pipe Locations
School	NWI Wetland	State Cleanup Site	Open Dump Waste Site	
Recreation Facility*	NWI Pond/Lake	Underground Storage Tank	Tire Waste Site	
Trail	Floodplain - DFIRM	Voluntary Remediation Program	Landfill Boundary	

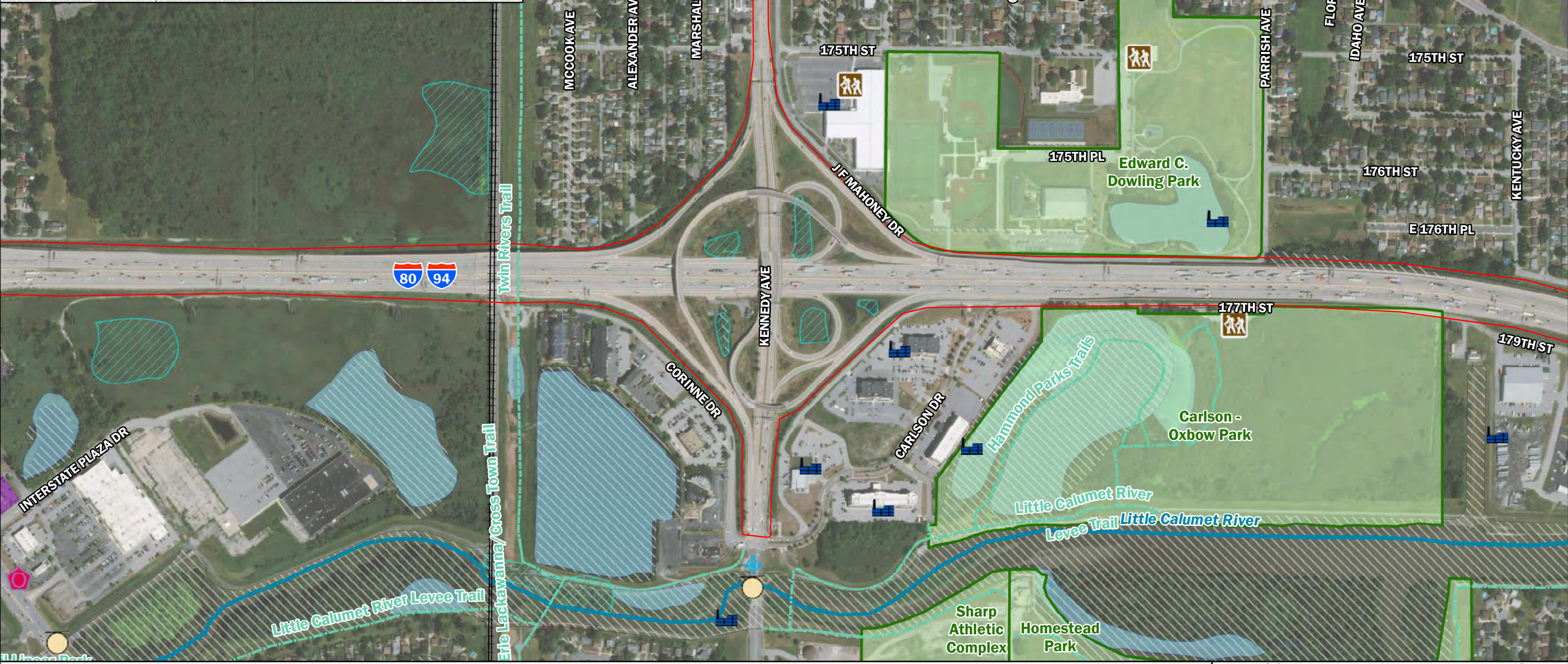
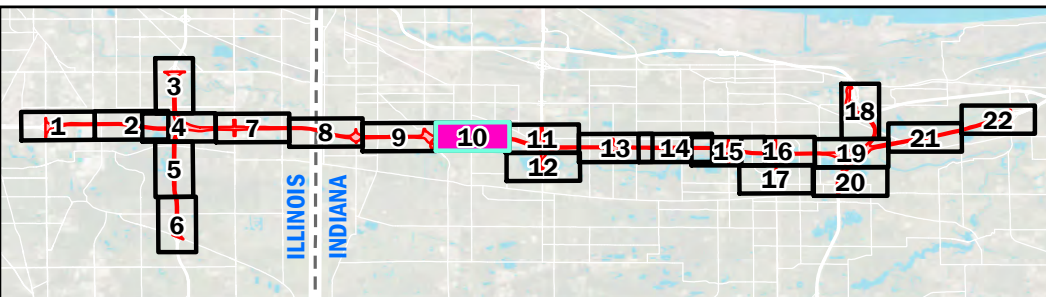
*Feature Not Available for Illinois



Sources
 Non-Orthophotography Data -
 Obtained from the State of
 Indiana Geographical
 Information Office Library and
 Cook County Government
 Orthophotography
 Obtained from
 ESRI World Imagery
 (www.arcgis.com)

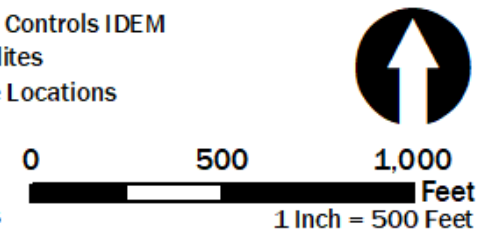
**I-80/94 Borman Expressway PEL Study
 Environmental Features
 Sheet 9 of 22**

Des. 1901643	
Date: 11/17/2021	



Study Area	Managed Land	Oil and Gas Well*	Construction/Demolition Site	Brownfields
Religious Facility	Natural Area	EDR Site	Solid Waste Landfill	Institutional Controls IDEM
Cemetery	NRHP Historic District	Superfund	Infectious/Medical Waste	NPDES Facilities
Railroad	NWI River/Stream	RCRA Generator/TSD	Leaking Underground Storage Tank	NPDES Pipe Locations
School	NWI Wetland	State Cleanup Site	Open Dump Waste Site	
Recreation Facility*	NWI Pond/Lake	Underground Storage Tank	Tire Waste Site	
Trail	Floodplain - DFIRM	Voluntary Remediation Program	Landfill Boundary	

*Feature Not Available for Illinois

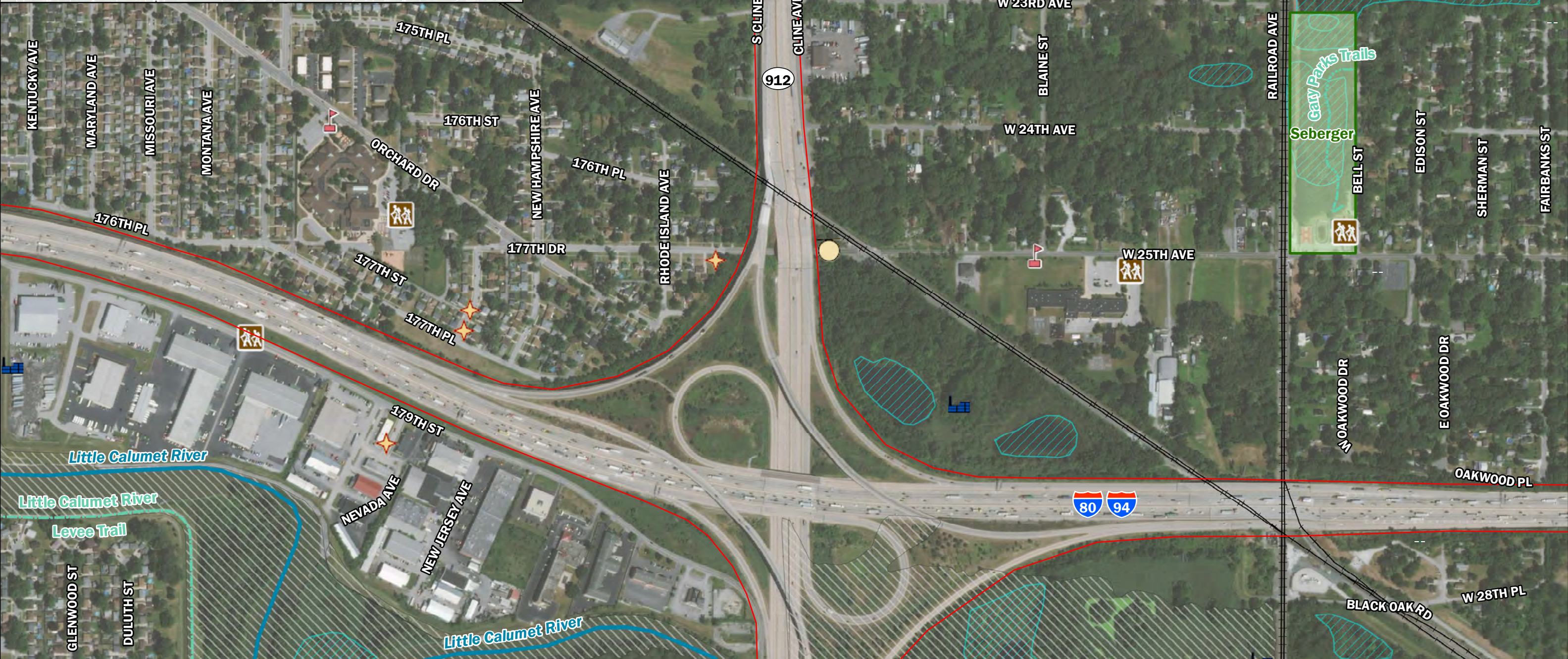
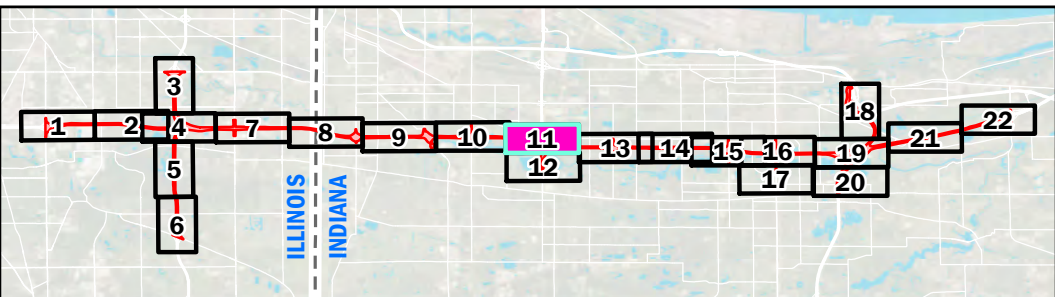


Sources:
 Non-Orthorectified Data -
 Obtained from the State of
 Indiana Geographical
 Information Office Library and
 Cook County Government
 Orthorectified Data -
 Obtained from
 ESRI World Imagery
 (www.arcgis.com)

**I-80/94 Borman Expressway PEL Study
 Environmental Features
 Sheet 10 of 22**

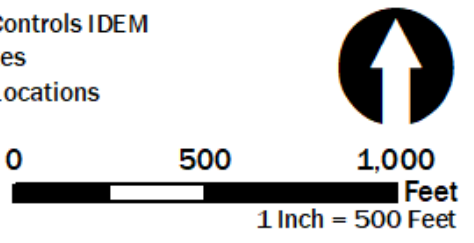
Des. 1901643
 Date: 11/17/2021





Study Area	Managed Land	Oil and Gas Well*	Construction/Demolition Site	Brownfields
Religious Facility	Natural Area	EDR Site	Solid Waste Landfill	Institutional Controls IDEM
Cemetery	NRHP Historic District	Superfund	Infectious/Medical Waste	NPDES Facilities
Railroad	NWI River/Stream	RCRA Generator/TSD	Leaking Underground Storage Tank	NPDES Pipe Locations
School	NWI Wetland	State Cleanup Site	Open Dump Waste Site	
Recreation Facility*	NWI Pond/Lake	Underground Storage Tank	Tire Waste Site	
Trail	Floodplain - DFIRM	Voluntary Remediation Program	Landfill Boundary	

*Feature Not Available for Illinois

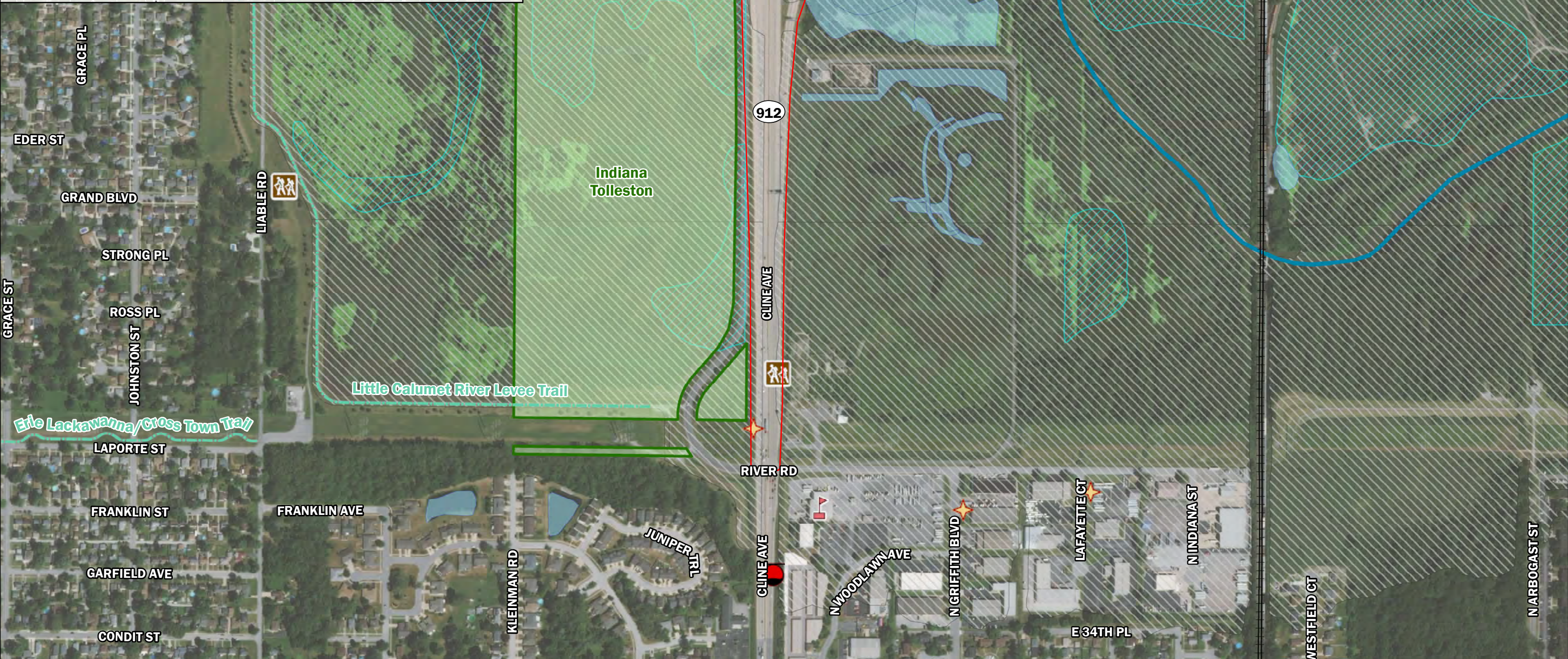
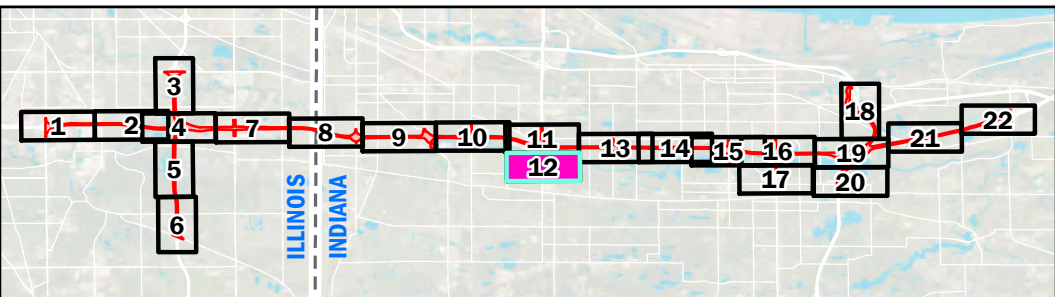


Sources:
 Non-Orthophotography Data -
 Obtained from the State of
 Indiana Geographical
 Information Office Library and
 Cook County Government
 Orthophotography -
 Obtained from
 ESRI World Imagery
 (www.arcgis.com)

**I-80/94 Borman Expressway PEL Study
 Environmental Features
 Sheet 11 of 22**

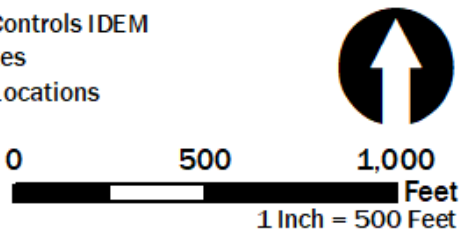
Des. 1901643
 Date: 11/17/2021





Study Area	Managed Land	Oil and Gas Well*	Construction/Demolition Site	Brownfields
Religious Facility	Natural Area	EDR Site	Solid Waste Landfill	Institutional Controls IDEM
Cemetery	NRHP Historic District	Superfund	Infectious/Medical Waste	NPDES Facilities
Railroad	NWI River/Stream	RCRA Generator/TSD	Leaking Underground Storage Tank	NPDES Pipe Locations
School	NWI Wetland	State Cleanup Site	Open Dump Waste Site	
Recreation Facility*	NWI Pond/Lake	Underground Storage Tank	Tire Waste Site	
Trail	Floodplain - DFIRM	Voluntary Remediation Program	Landfill Boundary	

*Feature Not Available for Illinois

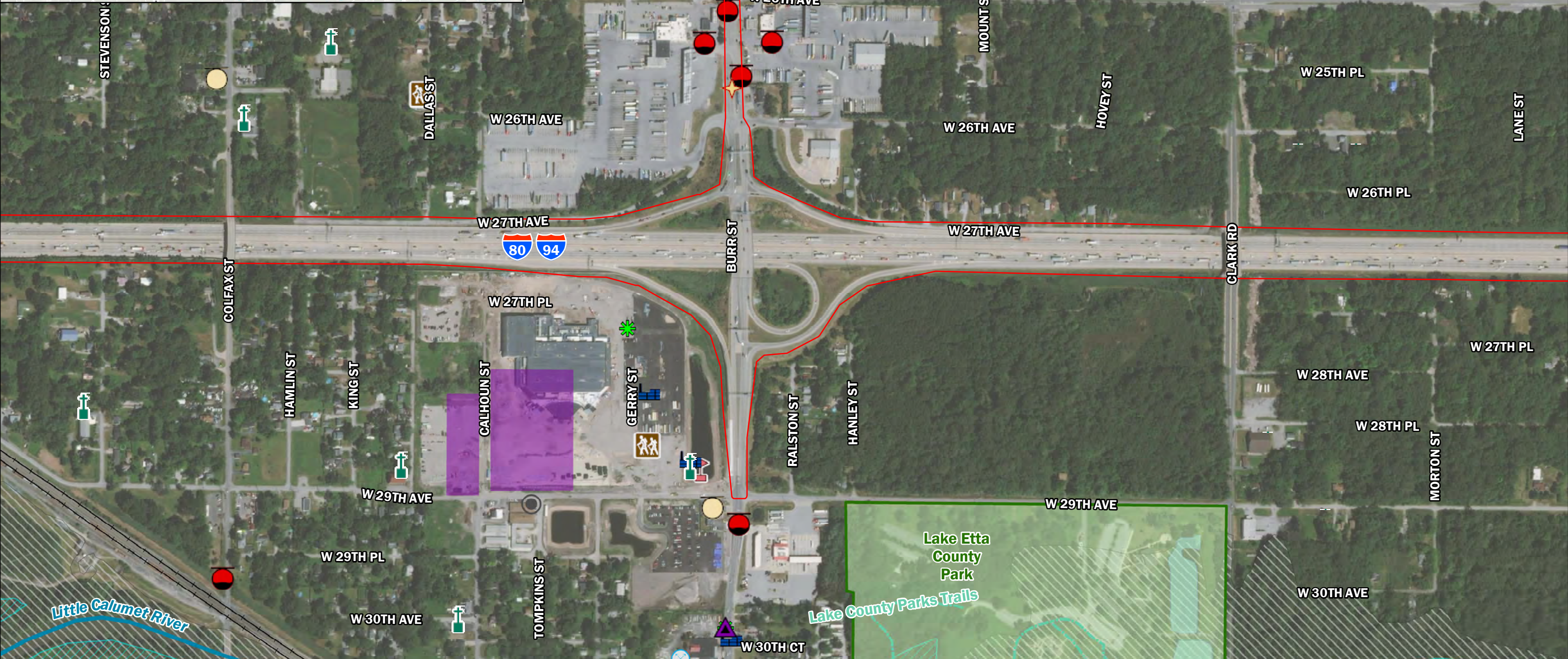
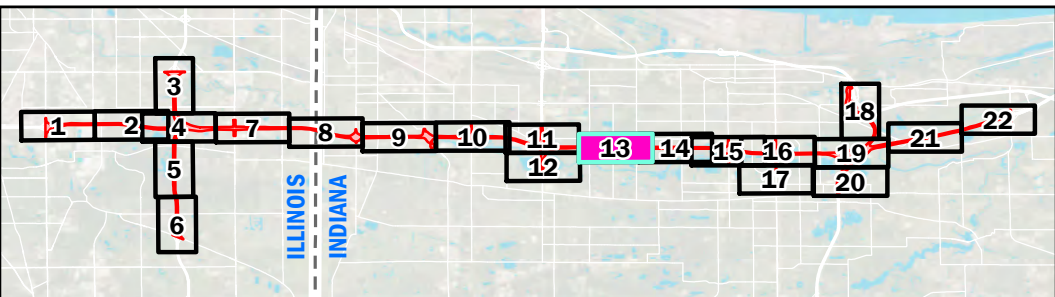


Sources:
 Non-Orthophotography Data -
 Obtained from the State of
 Indiana Geographical
 Information Office Library and
 Cook County Government
 Orthophotography -
 Obtained from
 ESRI World Imagery
 (www.arcgis.com)

**I-80/94 Borman Expressway PEL Study
 Environmental Features
 Sheet 12 of 22**

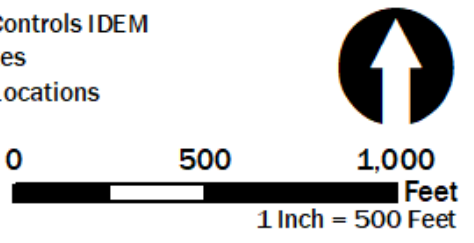
Des. 1901643
 Date: 11/17/2021





Study Area	Managed Land	Oil and Gas Well*	Construction/Demolition Site	Brownfields
Religious Facility	Natural Area	EDR Site	Solid Waste Landfill	Institutional Controls IDEM
Cemetery	NRHP Historic District	Superfund	Infectious/Medical Waste	NPDES Facilities
Railroad	NWI River/Stream	RCRA Generator/TSD	Leaking Underground Storage Tank	NPDES Pipe Locations
School	NWI Wetland	State Cleanup Site	Open Dump Waste Site	
Recreation Facility*	NWI Pond/Lake	Underground Storage Tank	Tire Waste Site	
Trail	Floodplain - DFIRM	Voluntary Remediation Program	Landfill Boundary	

*Feature Not Available for Illinois

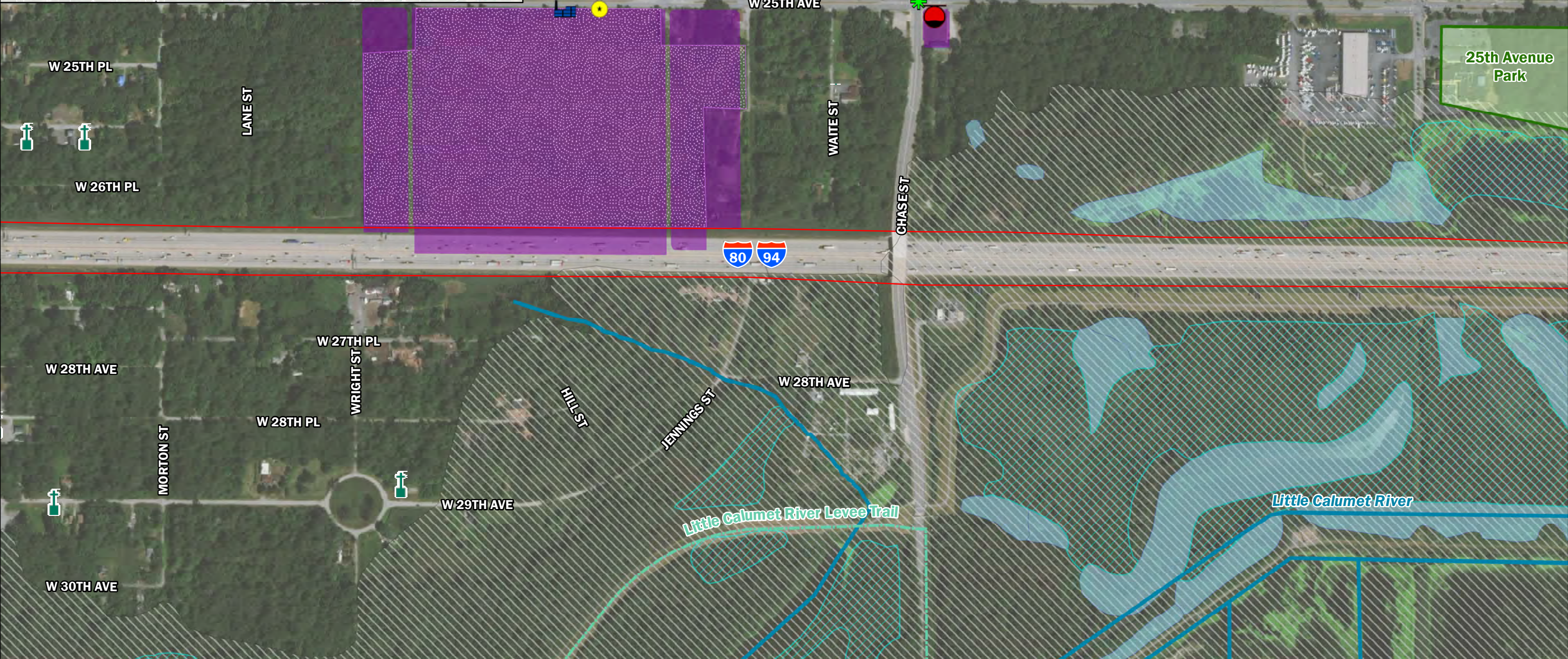
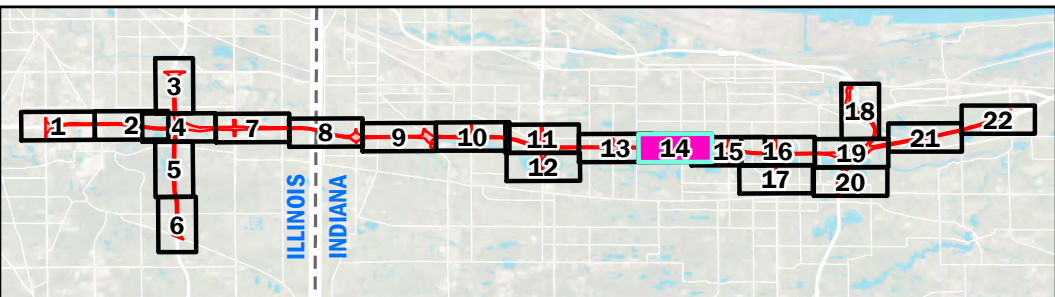


Sources:
 Non-Orthophotography Data -
 Obtained from the State of
 Indiana Geographical
 Information Office Library and
 Cook County Government
 Orthophotography -
 Obtained from
 ESRI World Imagery
 (www.arcgis.com)

**I-80/94 Borman Expressway PEL Study
 Environmental Features
 Sheet 13 of 22**

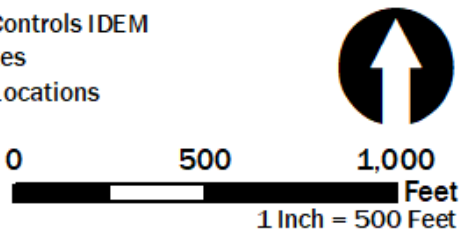
Des. 1901643
 Date: 11/17/2021





Study Area	Managed Land	Oil and Gas Well*	Construction/Demolition Site	Brownfields
Religious Facility	Natural Area	EDR Site	Solid Waste Landfill	Institutional Controls IDEM
Cemetery	NRHP Historic District	Superfund	Infectious/Medical Waste	NPDES Facilities
Railroad	NWI River/Stream	RCRA Generator/TSD	Leaking Underground Storage Tank	NPDES Pipe Locations
School	NWI Wetland	State Cleanup Site	Open Dump Waste Site	
Recreation Facility*	NWI Pond/Lake	Underground Storage Tank	Tire Waste Site	
Trail	Floodplain - DFIRM	Voluntary Remediation Program	Landfill Boundary	

*Feature Not Available for Illinois

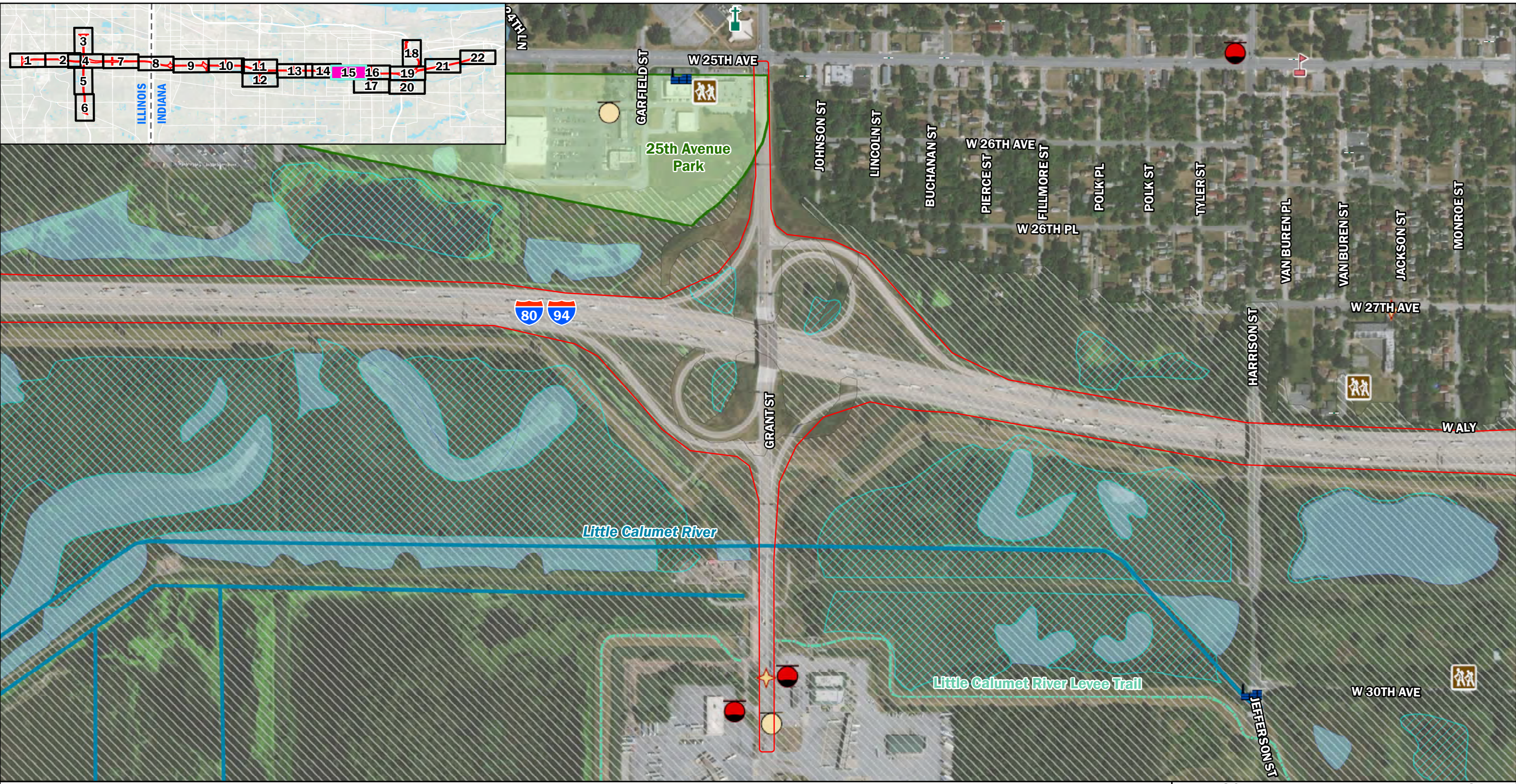


Sources:
 Non-Orthophotography Data -
 Obtained from the State of
 Indiana Geographical
 Information Office Library and
 Cook County Government
 Orthophotography -
 Obtained from
 ESRI World Imagery
 (www.arcgis.com)

**I-80/94 Borman Expressway PEL Study
 Environmental Features
 Sheet 14 of 22**

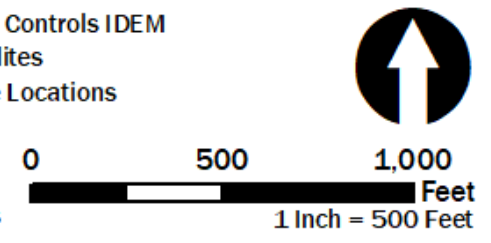
Des. 1901643
 Date: 11/17/2021





Study Area	Managed Land	Oil and Gas Well*	Construction/Demolition Site	Brownfields
Religious Facility	Natural Area	EDR Site	Solid Waste Landfill	Institutional Controls IDEM
Cemetery	NRHP Historic District	Superfund	Infectious/Medical Waste	NPDES Facilities
Railroad	NWI River/Stream	RCRA Generator/TSD	Leaking Underground Storage Tank	NPDES Pipe Locations
School	NWI Wetland	State Cleanup Site	Open Dump Waste Site	
Recreation Facility*	NWI Pond/Lake	Underground Storage Tank	Tire Waste Site	
Trail	Floodplain - DFIRM	Voluntary Remediation Program	Landfill Boundary	

*Feature Not Available for Illinois

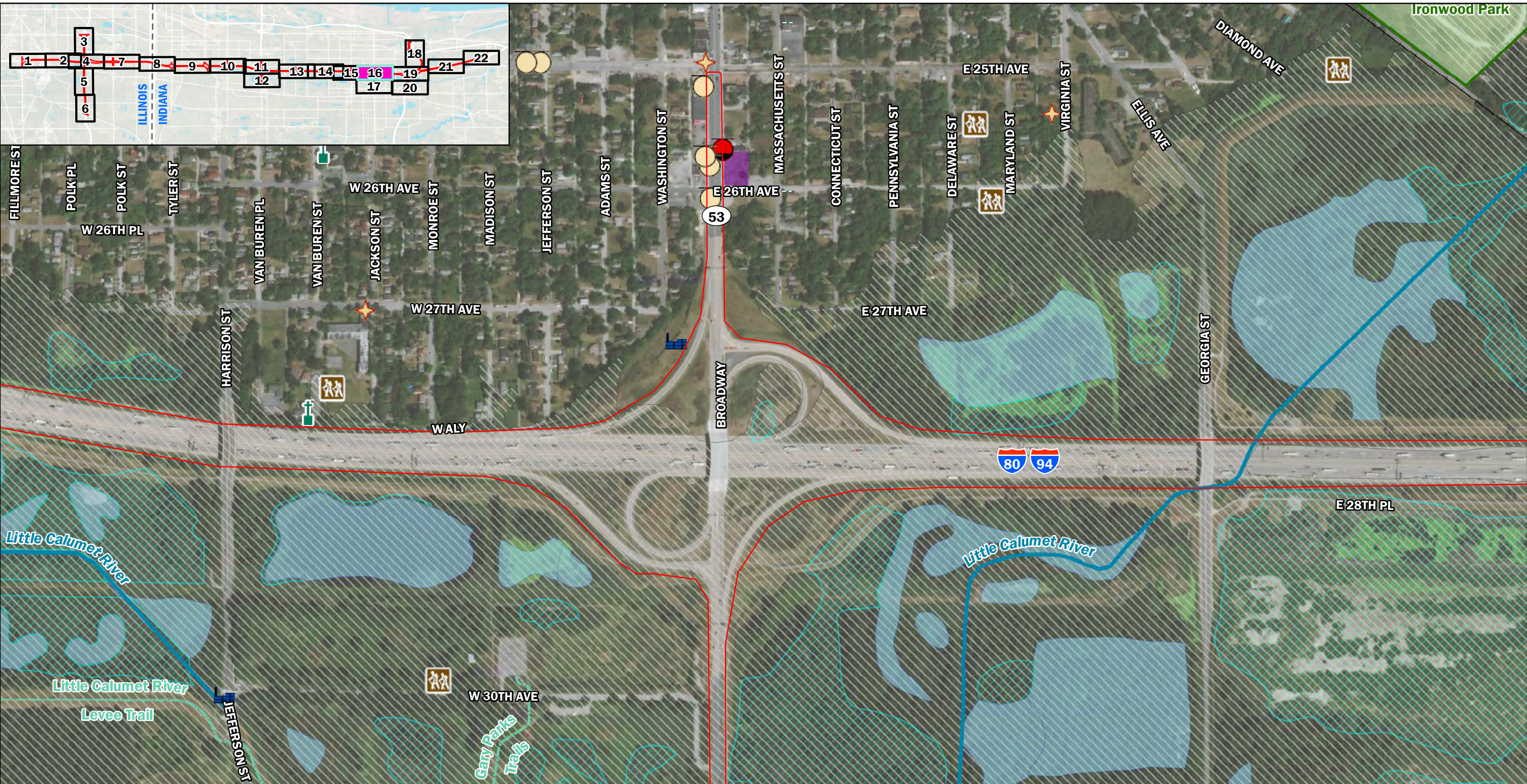


Sources:
 Non-Orthophotography Data -
 Obtained from the State of
 Indiana Geographical
 Information Office Library and
 Cook County Government
 Orthophotography
 Obtained from
 ESRI World Imagery
 (www.arcgis.com)

**I-80/94 Borman Expressway PEL Study
 Environmental Features
 Sheet 15 of 22**

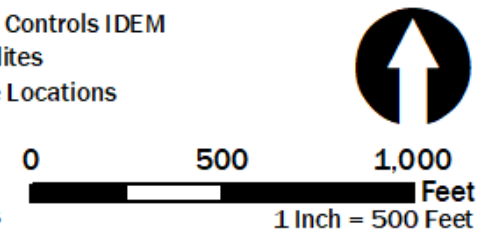
Des. 1901643
 Date: 11/17/2021





Study Area	Managed Land	Oil and Gas Well*	Construction/Demolition Site	Brownfields
Religious Facility	Natural Area	EDR Site	Solid Waste Landfill	Institutional Controls IDEM
Cemetery	NRHP Historic District	Superfund	Infectious/Medical Waste	NPDES Facilities
Railroad	NWI River/Stream	RCRA Generator/TSD	Leaking Underground Storage Tank	NPDES Pipe Locations
School	NWI Wetland	State Cleanup Site	Open Dump Waste Site	
Recreation Facility*	NWI Pond/Lake	Underground Storage Tank	Tire Waste Site	
Trail	Floodplain - DFIRM	Voluntary Remediation Program	Landfill Boundary	

*Feature Not Available for Illinois

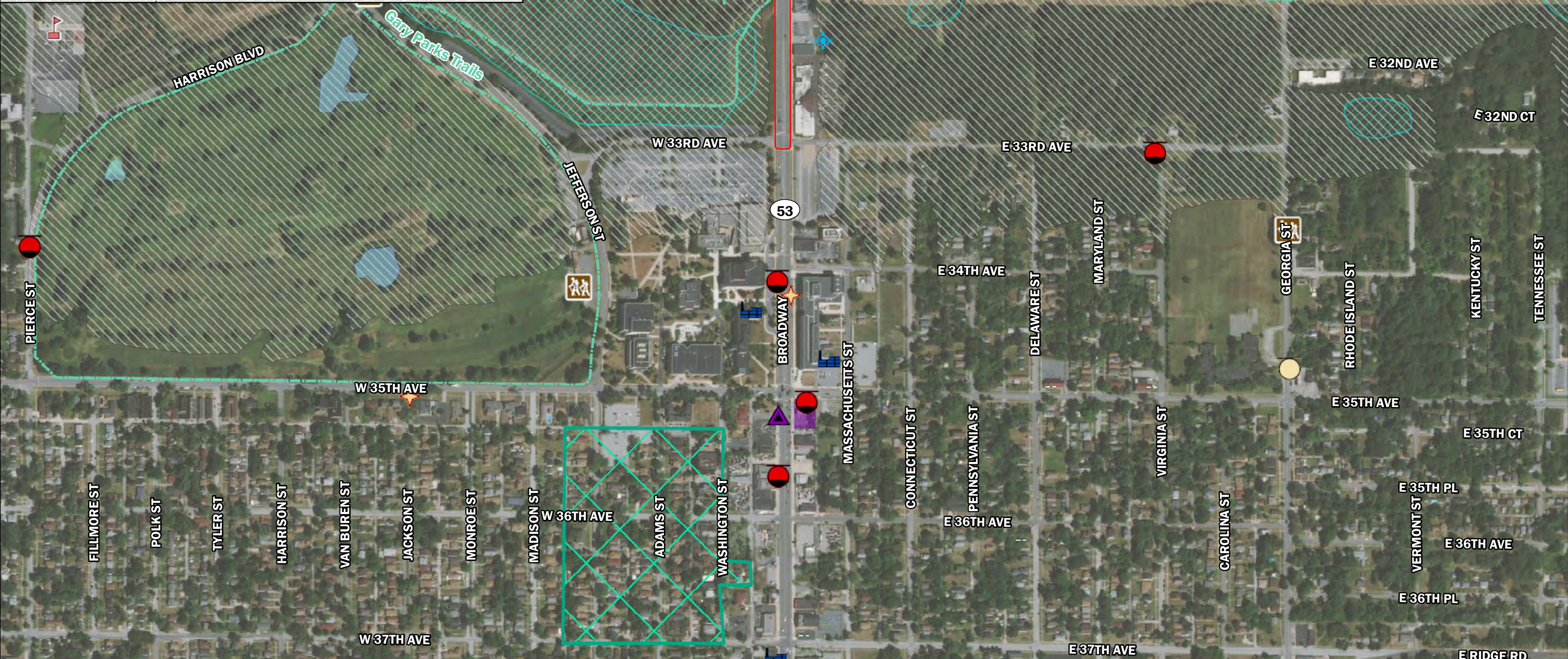
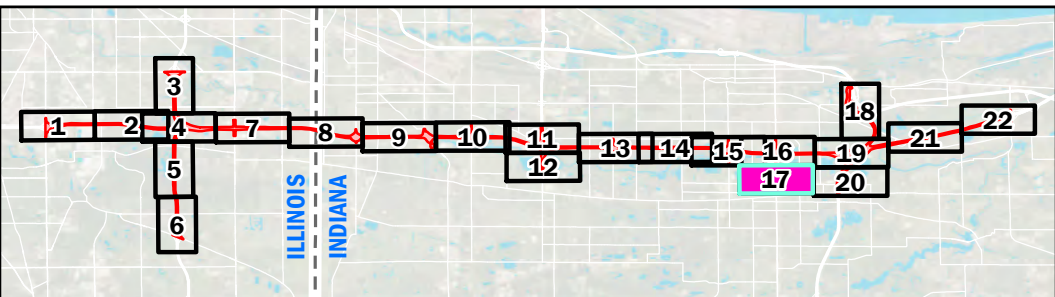


Sources:
 Non-Orthophotography Data -
 Obtained from the State of
 Indiana Geographical
 Information Office Library and
 Cook County Government
 Orthophotography -
 Obtained from
 ESRI World Imagery
 (www.arcgis.com)

**I-80/94 Borman Expressway PEL Study
 Environmental Features
 Sheet 16 of 22**

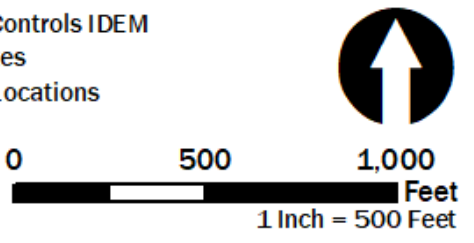
Des. 1901643
 Date: 11/17/2021





Study Area	Managed Land	Oil and Gas Well*	Construction/Demolition Site	Brownfields
Religious Facility	Natural Area	EDR Site	Solid Waste Landfill	Institutional Controls IDEM
Cemetery	NRHP Historic District	Superfund	Infectious/Medical Waste	NPDES Facilities
Railroad	NWI River/Stream	RCRA Generator/TSD	Leaking Underground Storage Tank	NPDES Pipe Locations
School	NWI Wetland	State Cleanup Site	Open Dump Waste Site	
Recreation Facility*	NWI Pond/Lake	Underground Storage Tank	Tire Waste Site	
Trail	Floodplain - DFIRM	Voluntary Remediation Program	Landfill Boundary	

*Feature Not Available for Illinois

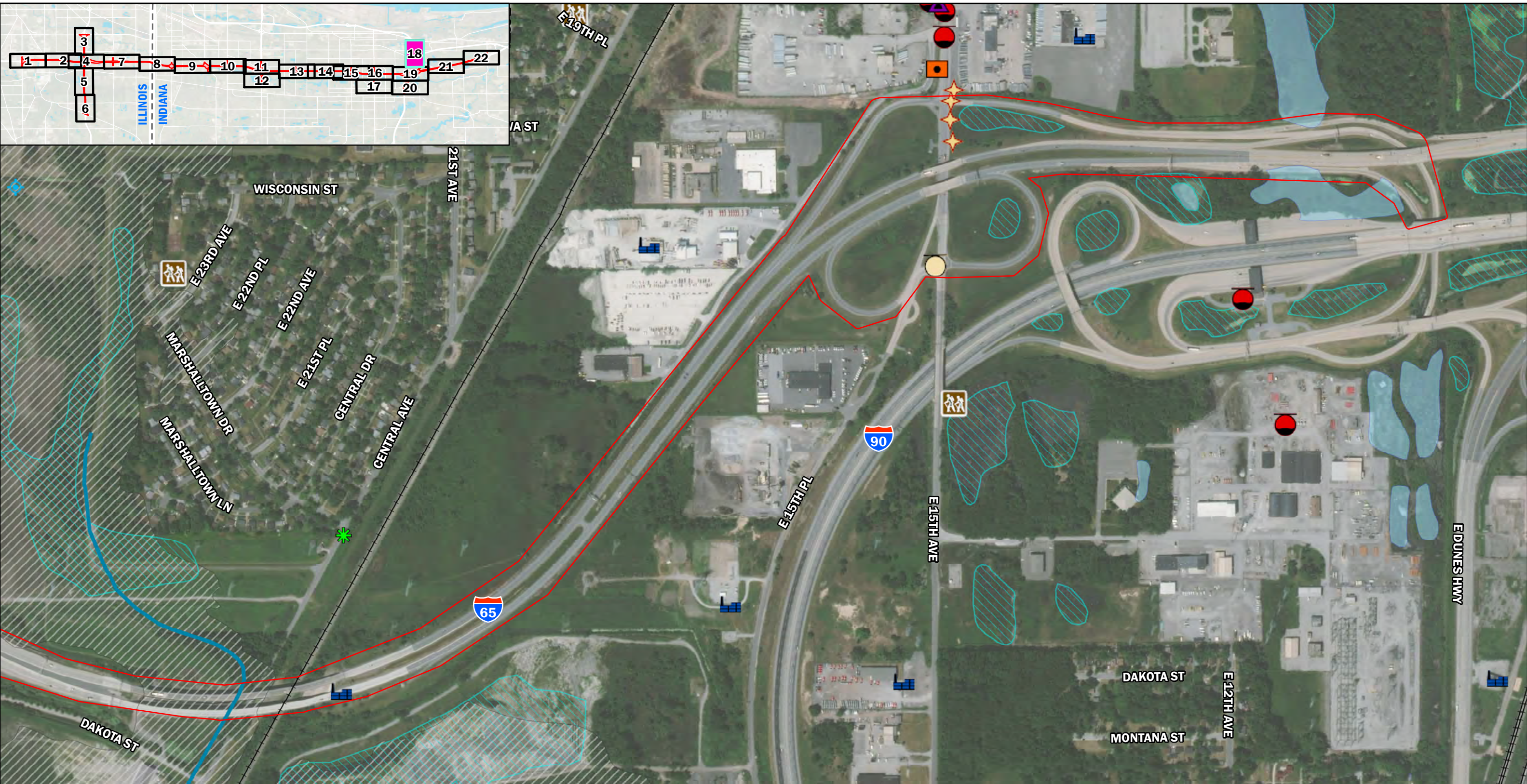


Sources:
 Non-Orthophotography Data -
 Obtained from the State of
 Indiana Geographical
 Information Office Library and
 Cook County Government
 Orthophotography -
 Obtained from
 ESRI World Imagery
 (www.arcgis.com)

**I-80/94 Borman Expressway PEL Study
 Environmental Features
 Sheet 17 of 22**

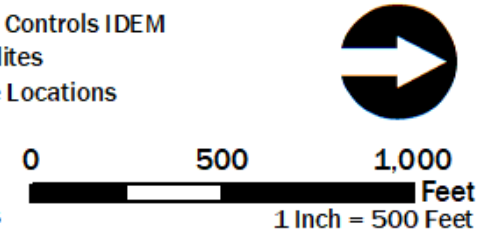
Des. 1901643
 Date: 11/17/2021





Study Area	Managed Land	Oil and Gas Well*	Construction/Demolition Site	Brownfields
Religious Facility	Natural Area	EDR Site	Solid Waste Landfill	Institutional Controls IDEM
Cemetery	NRHP Historic District	Superfund	Infectious/Medical Waste	NPDES Facilities
Railroad	NWI River/Stream	RCRA Generator/TSD	Leaking Underground Storage Tank	NPDES Pipe Locations
School	NWI Wetland	State Cleanup Site	Open Dump Waste Site	
Recreation Facility*	NWI Pond/Lake	Underground Storage Tank	Tire Waste Site	
Trail	Floodplain - DFIRM	Voluntary Remediation Program	Landfill Boundary	

*Feature Not Available for Illinois

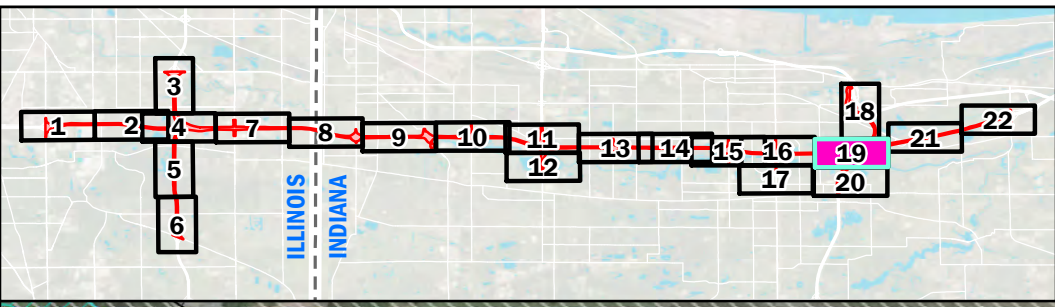


Sources
 Non-Orthophotography Data -
 Obtained from the State of
 Indiana Geographical
 Information Office Library and
 Cook County Government
 Orthophotography -
 Obtained from
 ESRI World Imagery
 (www.arcgis.com)

**I-80/94 Borman Expressway PEL Study
 Environmental Features
 Sheet 18 of 22**

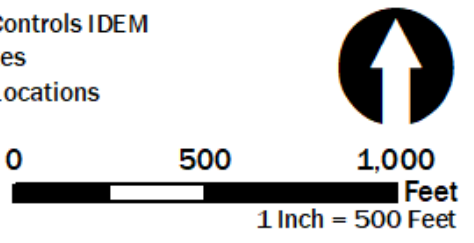
Des. 1901643
 Date: 11/17/2021





Study Area	Managed Land	Oil and Gas Well*	Construction/Demolition Site	Brownfields
Religious Facility	Natural Area	EDR Site	Solid Waste Landfill	Institutional Controls IDEM
Cemetery	NRHP Historic District	Superfund	Infectious/Medical Waste	NPDES Facilities
Railroad	NWI River/Stream	RCRA Generator/TSD	Leaking Underground Storage Tank	NPDES Pipe Locations
School	NWI Wetland	State Cleanup Site	Open Dump Waste Site	
Recreation Facility*	NWI Pond/Lake	Underground Storage Tank	Tire Waste Site	
Trail	Floodplain - DFIRM	Voluntary Remediation Program	Landfill Boundary	

*Feature Not Available for Illinois

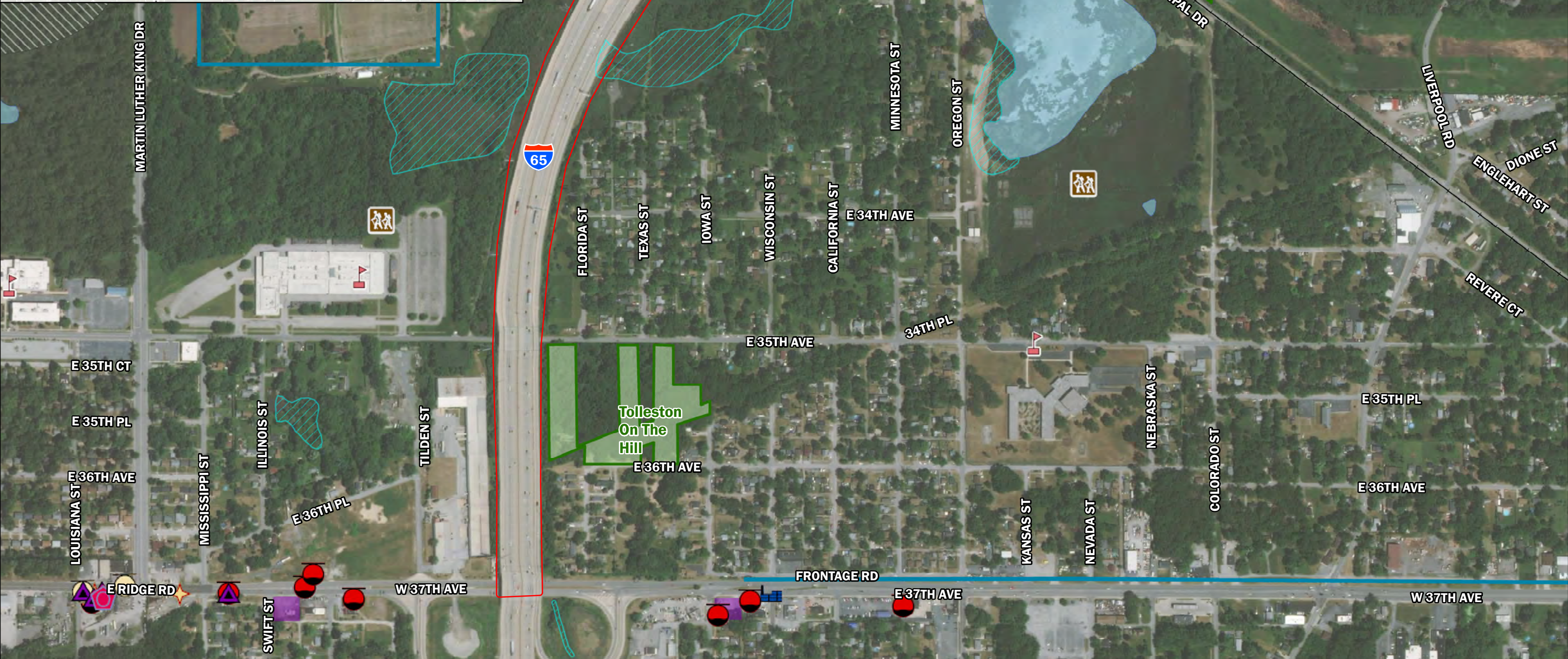
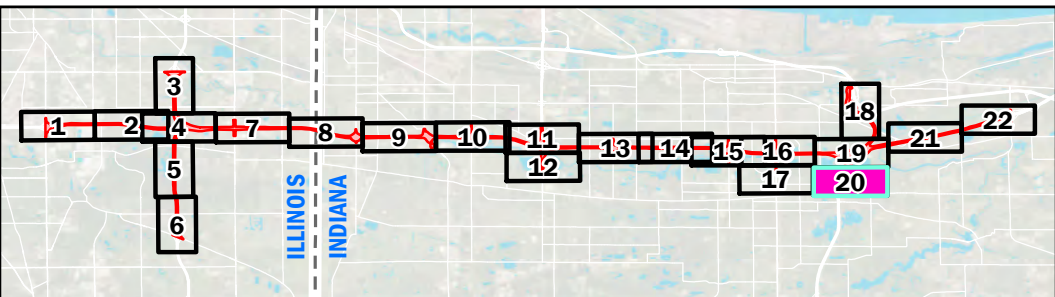


Sources:
 Non-Orthophotography Data -
 Obtained from the State of
 Indiana Geographical
 Information Office Library and
 Cook County Government
 Orthophotography -
 Obtained from
 ESRI World Imagery
 (www.arcgis.com)

**I-80/94 Borman Expressway PEL Study
 Environmental Features
 Sheet 19 of 22**

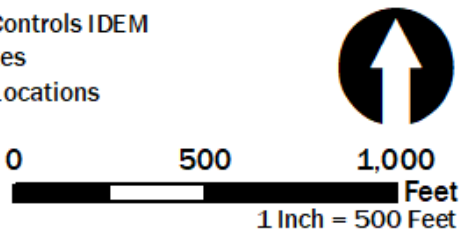
Des. 1901643
 Date: 11/17/2021





Study Area	Managed Land	Oil and Gas Well*	Construction/Demolition Site	Brownfields
Religious Facility	Natural Area	EDR Site	Solid Waste Landfill	Institutional Controls IDEM
Cemetery	NRHP Historic District	Superfund	Infectious/Medical Waste	NPDES Facilities
Railroad	NWI River/Stream	RCRA Generator/TSD	Leaking Underground Storage Tank	NPDES Pipe Locations
School	NWI Wetland	State Cleanup Site	Open Dump Waste Site	
Recreation Facility*	NWI Pond/Lake	Underground Storage Tank	Tire Waste Site	
Trail	Floodplain - DFIRM	Voluntary Remediation Program	Landfill Boundary	

*Feature Not Available for Illinois

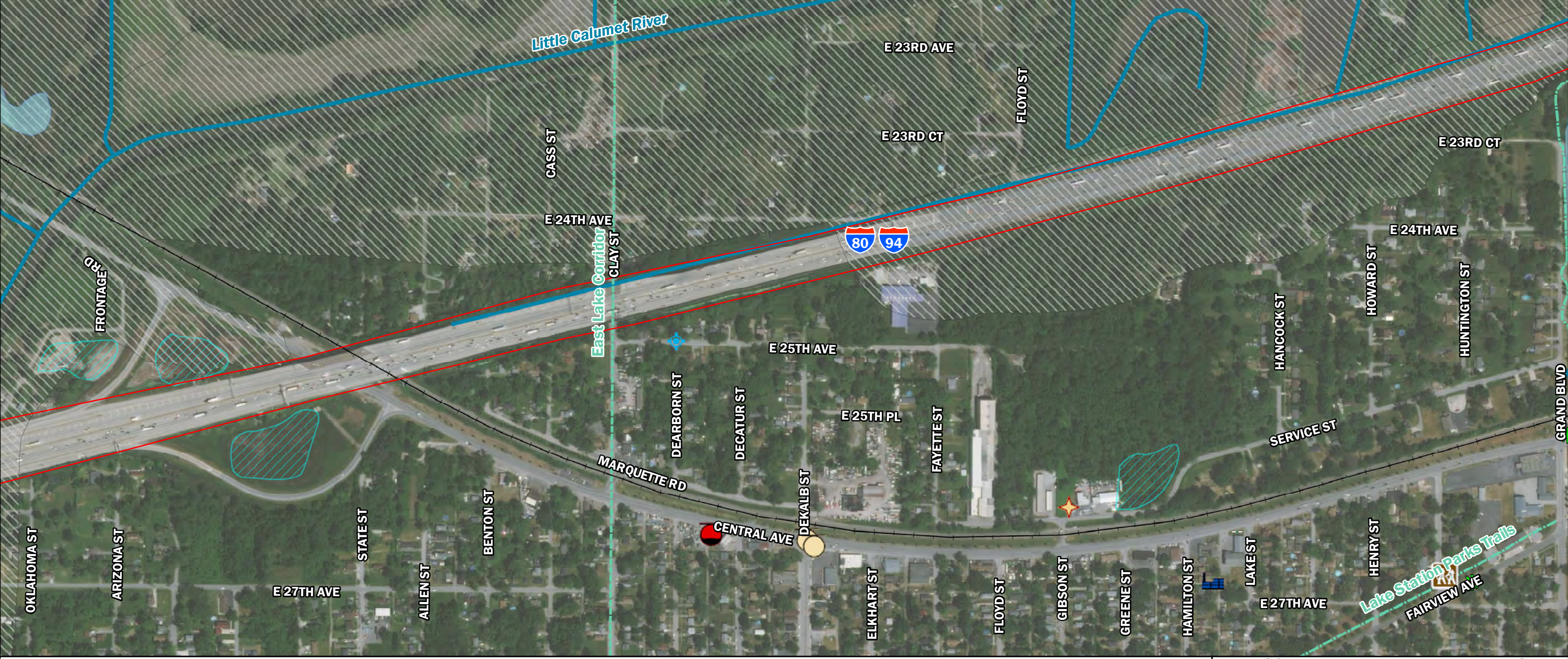
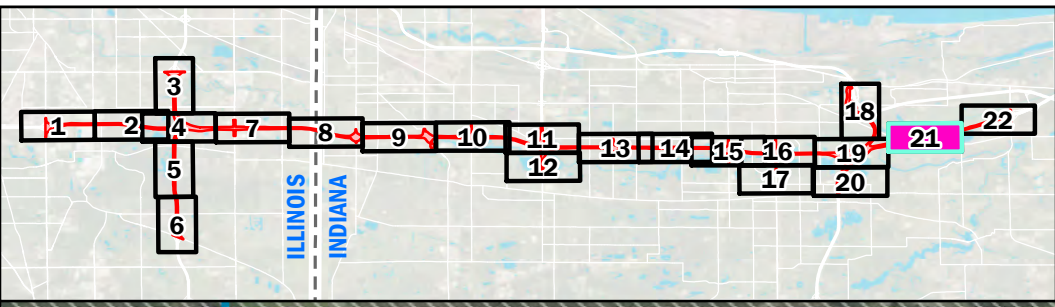


Sources:
 Non-Orthophotography Data -
 Obtained from the State of
 Indiana Geographical
 Information Office Library and
 Cook County Government
 Orthophotography
 Obtained from
 ESRI World Imagery
 (www.arcgis.com)

**I-80/94 Borman Expressway PEL Study
 Environmental Features
 Sheet 20 of 22**

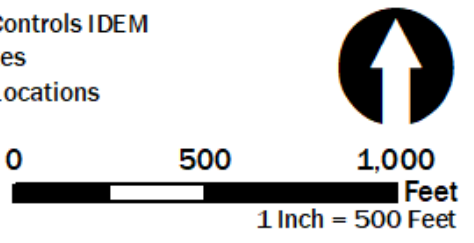
Des. 1901643
 Date: 11/17/2021





Study Area	Managed Land	Oil and Gas Well*	Construction/Demolition Site	Brownfields
Religious Facility	Natural Area	EDR Site	Solid Waste Landfill	Institutional Controls IDEM
Cemetery	NRHP Historic District	Superfund	Infectious/Medical Waste	NPDES Facilities
Railroad	NWI River/Stream	RCRA Generator/TSD	Leaking Underground Storage Tank	NPDES Pipe Locations
School	NWI Wetland	State Cleanup Site	Open Dump Waste Site	
Recreation Facility*	NWI Pond/Lake	Underground Storage Tank	Tire Waste Site	
Trail	Floodplain - DFIRM	Voluntary Remediation Program	Landfill Boundary	

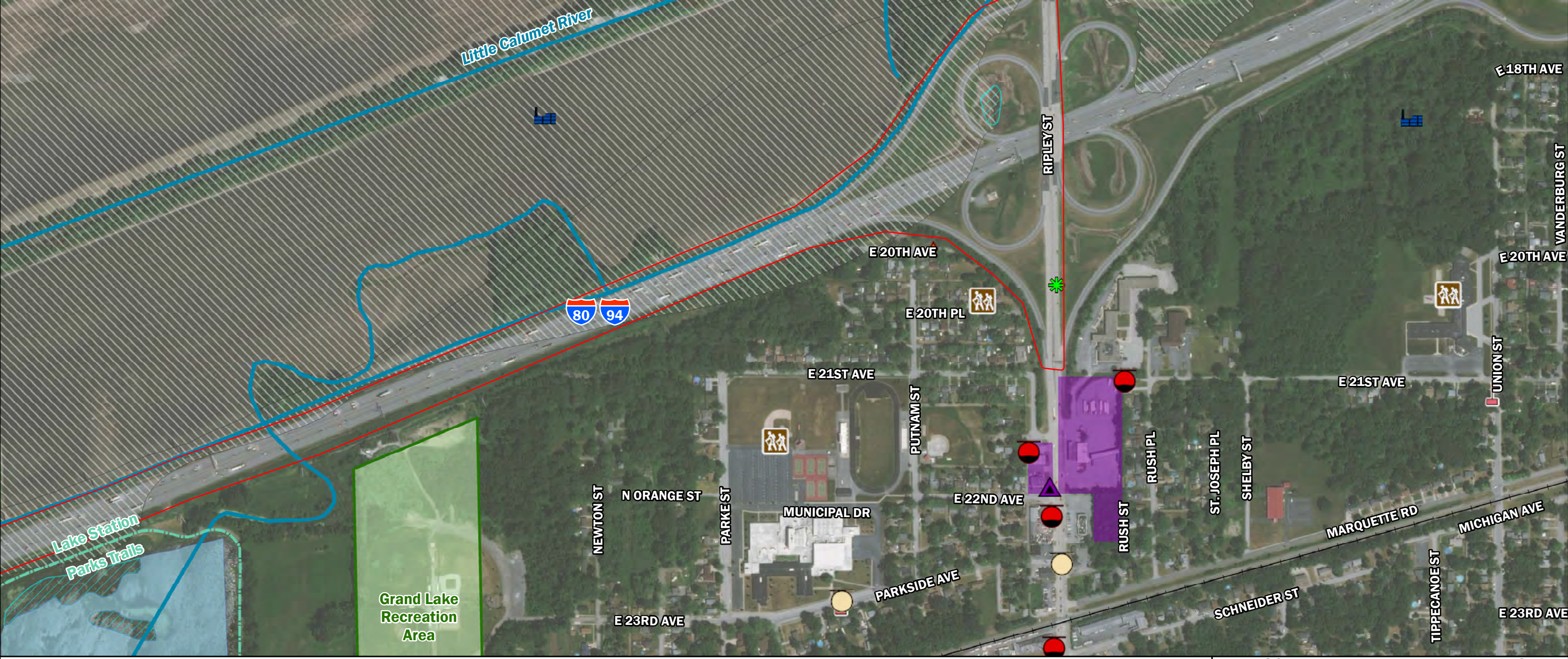
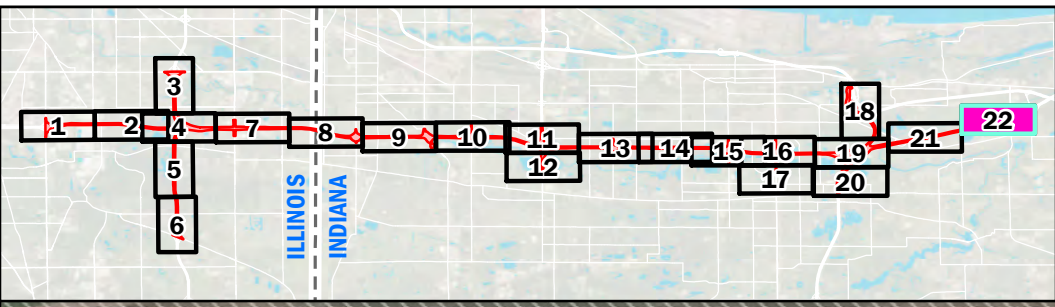
*Feature Not Available for Illinois



Sources:
 Non-Orthophotography Data -
 Obtained from the State of
 Indiana Geographical
 Information Office Library and
 Cook County Government
 Orthophotography
 Obtained from
 ESRI World Imagery
 (www.arcgis.com)

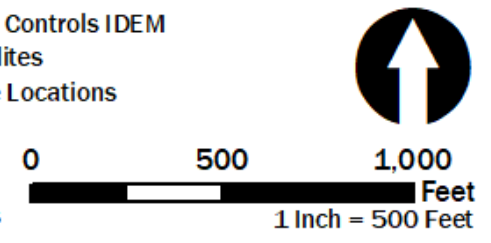
**I-80/94 Borman Expressway PEL Study
 Environmental Features
 Sheet 21 of 22**

Des. 1901643	
Date: 11/17/2021	



Study Area	Managed Land	Oil and Gas Well*	Construction/Demolition Site	Brownfields
Religious Facility	Natural Area	EDR Site	Solid Waste Landfill	Institutional Controls IDEM
Cemetery	NRHP Historic District	Superfund	Infectious/Medical Waste	NPDES Facilities
Railroad	NWI River/Stream	RCRA Generator/TSD	Leaking Underground Storage Tank	NPDES Pipe Locations
School	NWI Wetland	State Cleanup Site	Open Dump Waste Site	
Recreation Facility*	NWI Pond/Lake	Underground Storage Tank	Tire Waste Site	
Trail	Floodplain - DFIRM	Voluntary Remediation Program	Landfill Boundary	

*Feature Not Available for Illinois



Sources:
 Non-Orthophotography Data -
 Obtained from the State of
 Indiana Geographical
 Information Office Library and
 Cook County Government
 Orthophotography
 Obtained from
 ESRI World Imagery
 (www.arcgis.com)

**I-80/94 Borman Expressway PEL Study
 Environmental Features
 Sheet 22 of 22**

Des. 1901643
 Date: 11/17/2021

